

ISSUE 04

THE OFFICIAL MATCHDAY PROGRAMME £3.00



SWINDON TOWN VS
CREWE ALEXANDRA

SAT 23RD AUG 2014
3PM KICK-OFF
SKY BET LEAGUE 1

RED & WHITE



IMAGINE
CRUISING



DAVID M. COE
FINANCIAL PLANNING LTD



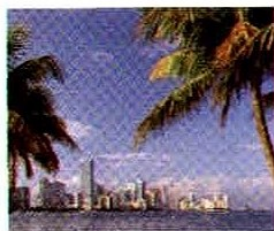
IMAGINE CRUISING

Exclusive Deals for Swindon Town Fans fr **£549**pp

Call free today on **0800 840 5936** and quote **imaginestfc** to book.

11 NIGHT NEW YORK & MIAMI STAY & CARIBBEAN CRUISE

DEPARTS 04 DECEMBER 2014



NORWEGIAN
CRUISE LINE

On-board NCL Getaway

Your journey begins with a flight and travel to New York for a 2 night stay. After the excitement of New York you fly to Miami for 2 nights before setting sail on a 7 nights cruise, visiting St Maarten, St Thomas, Nassau and finally returning to Miami for your return flight home.

Your holiday includes:

- 2 night New York Stay
- 2 night Miami stay
- 7 night full board cruise
- Return flights

• Inside fr **£1,299**pp

Outside fr **£1,399**pp
Balcony fr **£1,399**pp
Suite fr **£1,599**pp

15 NIGHT BEIJING TO HONG KONG CRUISE

DEPARTS 09 APRIL 2015



PRINCESS CRUISES

On-board Sapphire Princess

Your 15 night journey begins with a flight to Beijing, where you'll spend 1 night before embarking on a 14 night Sapphire Princess cruise visiting Korea, Osaka, Shanghai, Okinawa, Taipei, Kaohsiung and Hong Kong.

Your holiday includes:

- 1 night Beijing Stay
- 14 night full board cruise
- Return Flights

• Inside fr **£1,499**pp

Outside fr **£1,699**pp
Balcony fr **£1,999**pp
Suite fr **£2,799**pp

8 NIGHT MEDITERRANEAN STAY & CRUISE

DEPARTS 14 OCTOBER 2014



P&O CRUISES

On-board P&O Ventura

Your journey begins with a flight and travel to Genoa. In Genoa you'll spend 1 night in a 4* hotel. You will then set sail on a 7 nights P&O Ventura cruise to discover the jewels of the Med visiting Genoa, Monte Carlo, Toulon, Barcelona, Mallorca and Malaga.

Your holiday includes:

- 1 night Genoa Stay
- 7 night full board cruise

• Inside fr **£549**pp

Outside fr **£699**pp
Balcony fr **£699**pp
Suite fr **£1,399**pp

7 NIGHT JEWELS OF THE EMIRATES CRUISE

DEPARTS 23 JANUARY 2015



Costa

On-board Costa Serena

Your journey begins with a flight and travel to Dubai, the home to sparkling tall buildings, glitzy shops and the sun-soaked beaches. You will then set sail on a 7 night Costa Serena cruise from Dubai, visiting Dubai, Muscat, Khasab, Abu Dhabi and Dubai.

Your holiday includes:

- 1 night pre & post stop over on-board Costa Serena in Dubai
- 7 night full board cruise

• Inside fr **£839**pp

Outside fr **£939**pp
Balcony fr **£1,149**pp
Suite fr **£1,699**pp

Call today on: **0800 840 5936** or visit: **imaginecruising.co.uk**

Prices are per person based on 2 adults sharing an Inside Cabin. Outside, Balcony or Grill Suite. Imagine Cruising are ATOL protected. When paying by credit card a 2.5% charge will be applied. All prices are in GBP. All prices are per person based on 2 adults sharing an Inside Cabin. Outside, Balcony or Grill Suite. Imagine Cruising are ATOL protected. When paying by credit card a 2.5% charge will be applied. All prices are in GBP. All prices are per person based on 2 adults sharing an Inside Cabin. Outside, Balcony or Grill Suite. Imagine Cruising are ATOL protected. When paying by credit card a 2.5% charge will be applied. All prices are in GBP.

ABTA
ABTA No. Y2501



TODAY'S SQUADS...

RED&WHITE



23.08.14 3:00PM

SWINDON TOWN

MANAGER: Mark Cooper



P	G	Y	R
1			
2			
3			
4			
6			
7			
8			
9			
10			
11			
15			
16			
17			
18			
19			
21			
22			
23			
24			
25			
26			
27			
29			
30			
31			
32			

CREWE ALEXANDRA

MANAGER: Steve Davis



P	G	Y	R
1			
2			
3			
4			
5			
6			
7			
8			
9			
10			
11			
13			
14			
15			
16			
17			
18			
19			
20			
21			
22			
23			
24			
25			
26			
27			
28			
42			



WIN £250,000 FOR YOUR CLUB

FIND OUT MORE INSIDE



MATCH OFFICIALS

Referee: Lee Collins
 Assistant 1: Stephen Daly
 Assistant 2: Craig Hicks
 4th Official: Antony Coggins



DEACONS

T: 01793 522 072 / 527 530
www.deacons-jewellers.com



sky BET

**WIN
£250,000
FOR YOUR
CLUB**

**SUPPORT SWINDON
TOWN WITH US
THIS SEASON**



ARE YOU IN?
skybet.com/swindon

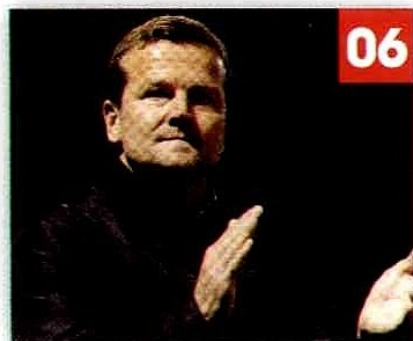


IN THIS ISSUE...

Editor: Tom Otrebski
Design: Derrick Johnson
Contributors: David Wallis, Steve White, Paul Plowman, Alyn Smith

With thanks to Rob Wilson & Matt Johnson at Crewe Alexandra Football Club

Photography: Rob Noyes, PA Photos, Action Images, Callum Hampson, Richard Wintle
 Calyx Picture Agency, Gareth Owen/LTFC
For advertising sales call: 0844 358 2668



06

6 MANAGER'S NOTES

Mark Cooper

9 FROM THE TOP

Lee Power

11 CLUB NEWS

All the latest

13 NATHAN THOMPSON

Captain's notes

15 TODAY'S VISITORS

Crewe Alexandra

22 PROGRAMME VAULT

A look into the archives

24 COMMERCIAL NEWS

With Adam Wainwright

27 JORDAN TURNBULL

Feature Interview

37 TREATMENT ROOM

With Paul Godfrey

38 MATCH ACTION

vs Scunthorpe United

44 JUNIOR REDS

Fun and games

47 FANS GALLERY

Your snaps

51 FANATIC'S ATTIC

Club brochures

52 MATCH ACTION

vs Luton Town

56 50s IN FOCUS

A look back into the archives

63 GEORGE HUDSON

In Memoriam

67 STFC ACADEMY

With Jeremy Newton

72 COMMUNITY NEWS

News round-up

75 STEVE WHITE

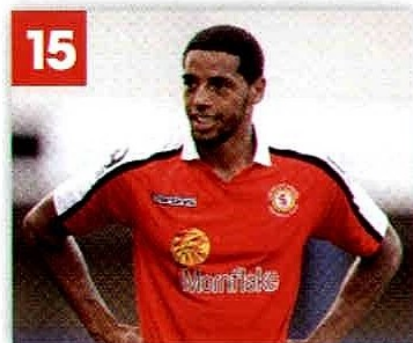
Guest writer

76 TICKETS & TRAVEL

Important information

62 GAME CENTRE

2014/15 Fixtures



15



27



63



SWINDON TOWN FOOTBALL CLUB

The County Ground, County Road, Swindon, SN1 2ED.

Switchboard: 0871 876 1879

STFC Store: 0871 876 1993

Websites: www.swindontownfc.co.uk
www.stfcdirect.com

Chairman: Lee Power

Directors: Lee Power & Sangita Shah

General Manager: Steve Anderson

Manager: Mark Cooper

First Team Coach: Luke Williams

Head of Goalkeeping: Steve Hale

Academy Manager: Jeremy Newton

Under-18s Manager: Scott Lindsey

Sports Scientist: Michael Cooper

Physiotherapist: Paul Godfrey

Video Analyst: Alex Seager

Kit Manager: Roger Jones / Mark Hampson

CLUB HONOURS

Football League Cup Winners: 1968/69

FA Cup Semi-Finalists: 1909/10, 1911/12

Football League Second Tier Play-Off Winners: 1989/90, 1992/93

Football League Third Tier Winners: 1995/96
Runners-Up: 1962/63, 1968/69
Play-Off Winners: 1986/87

Football League Fourth Tier Winners: 1985/86, 2011/12

Southern League Winners: 1910/11, 1913/14

Football League Trophy Finalists: 2011/12

FA Youth Cup Finalists: 1964

FA Charity Shield Runners-Up: 1911

Anglo-Italian Cup Winners: 1969/70

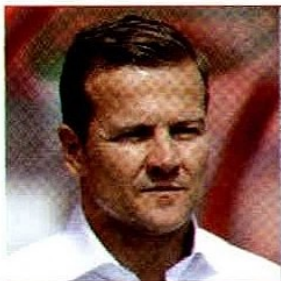
Anglo-Italian League Cup Winners' Cup Winners: 1968/69

Dubonnet Cup Winners: 1909/10

Wiltshire Cup Winners: 1886/87, 1887/88, 1888/89, 1889/90, 1890/91, 1891/92, 1892/93, 1896/97, 1903/04, 1919/20

SWINDON TOWN FOOTBALL CLUB STAFF:

Club Secretary Louise Fletcher / **Head of Commercial** Keelan McNally / **Head of Finance** Debbie Carney / **Finance Assistant** Tina Rigby / **Business Administrator** Karen Randall / **Academy Administrator** Karen Almsow / **Academy Skills Coach** Sean Wood / **Academy Phase Coach** Jamie Pitman / **Academy Physio** Chris Jones
Club Chaplain Simon Stevenette / **Sales & Marketing Executives** Kay Wainwright, Adam Wainwright / **Press Officer** Tom Otrebski / **Media Assistant** Callum Hampson / **Head of Creative & Design** Derrick Johnson / **Stadium Maintenance** Fred Brown, Matthew Vernon / **Retail & Ticketing Manager** Claire Scarth / **Retail & Ticketing Supervisor** Jason McGinley / **Player Liaison** Ryan Sharland / **Pitch Maintenance** Marcus Cassidy / **Centreplate Catering** Venue Manager Chris Abrook / **STFC** Mike Spearman (Chairman), Clive Maguire, Jon Holloway, Shane Hewlett, Andy Ealey.



THE GAFFER

MARK COOPER

To sponsor this page
call 0844 358 2668

GOOD afternoon and welcome to The County Ground as we give a warm welcome to Crewe Alexandra.

I think we've been really good and I'm pleased with the start we've made to the season. Yes, we've conceded some soft goals - I think that's the nature of the age of the boys we've got but we need to keep on working on that and make sure we eradicate those mistakes. I think football-wise we've been fantastic and we are slowly but surely getting a reputation as being a good football team, which is what we want. Yes, we want to win games as well but it's a process that will bear fruit the longer it goes on.

Anybody that was at Gillingham the other night saw the performance and I'm sure they enjoyed watching it. I had a number of Gillingham fans come up to me at the end and commend us on our performance saying that it was sensational. I think all Swindon fans are enjoying it too. We'd like to score more goals - everyone would - we'd like to concede fewer goals but they're young boys, they're doing brilliantly and I'm proud of them.

We were distraught last Saturday after the result at Crawley. It was such a dominant performance after a long journey away from home and yet we came away with nothing. I think we showed towards the end against Gillingham what it meant to get something and we could easily have won it at the end as well with a chance from



"Anybody that was at Gillingham the other night saw the performance and I'm sure they enjoyed watching it."

Andy Williams' cross. Hopefully we'll sort the problem out with the goals conceded and move forward.

It will be nice to be back at home today against Crewe. It will be nice to get our fans behind us. You're really appreciative of what we are trying to do and the style that

we're playing so it will be great to get seven or eight thousand people behind us and cheering the boys on.

I'm sure Crewe will come and play football like they always do and, hopefully, if it's as good a game as it was last season at home, then we'll be really happy.

Please keep with the boys - they need you. The more you're with them the better they'll get.

Keep believing.

MARK COOPER
MANAGER

A man, likely a football manager, is captured in a moment of intense emotion on a football pitch. He is wearing a white long-sleeved shirt and dark trousers. He is pointing his right index finger towards the left side of the frame, with his mouth wide open as if shouting or giving instructions. His left hand is clenched into a fist near his chest. The background is a blurred stadium filled with spectators, with red seating visible. The overall tone is one of frustration or determination.

**"IT WAS SUCH
A DOMINANT
PERFORMANCE
AFTER A LONG
JOURNEY AWAY
FROM HOME
AND YET WE
CAME AWAY
WITH NOTHING."**

making the right recruitment connections

C&D Group are innovative consultant recruiters, totally committed and passionate to providing the highest standard of service to our clients and candidates.

Whether you're looking for part-time work or you're on the hunt for the next big career challenge, C&D have a variety of positions to suit your skills, or recruitment needs.

Counter-Balance and Reach FLT Drivers

Swindon £6.80-£8.95 per hour

Email Chris.hornbuckle@cdrecruitment.co.uk

Class One Drivers

Swindon £110 per shift days

£130 per shift nights

HGV1 Weekends

Thursday-Sunday nights

rates from £12.50-£14 per hour

HGV1 with FLT Counter-Balance licence

Rates from £10-£12 per hour

Email Maggie@cdrecruitment.co.uk

All you need to do is get in touch

Contact our team on [01793 488057](tel:01793488057)

Email info@cdrecruitment.co.uk

Or visit cdrecruitment.co.uk



cdrecruitment.co.uk



FROM THE TOP

LEE POWER

To sponsor this page
call 0844 358 2668

I would like to welcome all the Directors, players, supporters and officials from Crewe Alexandra to The County Ground this afternoon.



WE have been pleased with the start that we have made to the season. So far, we have seen two very good wins against Scunthorpe and Luton but the best we've played was against Crawley and yet, we came away empty handed.

We appealed Louis Thompson's red card and my understanding is, at the time of writing these notes, that we have not been successful with that appeal and are awaiting relevant paperwork to tell us why which I'm very much looking forward to seeing. I have watched the incident four or five times since and it is as clear as a bell that Louis has won the ball. Not only should it not be a penalty but to be sent off is very harsh to say the least. I am baffled as to why the people who are looking at the same thing as everyone else, have not

overturned the decision but, as I say, I am awaiting the paperwork.

I wasn't at Gillingham in midweek but it was good to take a point away from there - a very difficult place to go. My understanding is that we played well in the first half and two sloppy goals cost us taking three points rather than just one.

Finally, I am currently working on trying to bring in one or two players before the end of the transfer window but, as of yet, have no news to tell you about.

Enjoy today's game.

LEE POWER
CHAIRMAN

"I am baffled as to why the people who are looking at the same thing as everyone else, have not overturned the decision."

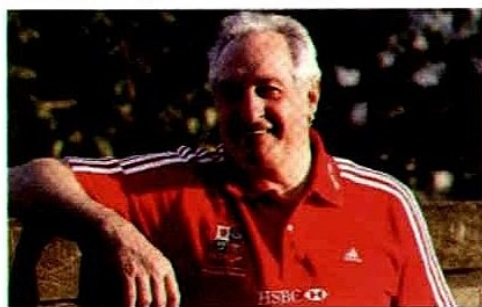


The Rotary Club of Swindon Phoenix

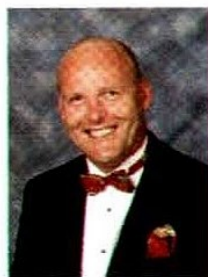
Charity Sporting Dinner

Saturday 11th October 2014

Marriott Hotel, Pipers Way, Swindon SN3 1SH



Guest Speaker: Gareth Edwards MBE



Comedian: Adgar Brown

3 course Meal - followed by Cheese board and coffee

Auction Prizes: Raffle prizes - plus many other attractions

**Proceeds to: Swindon Down's Syndrome Group &
Swindon Guide Dogs**

Times: 7 for 730 pm

Dress code: Black Tie or Lounge Suits Partners: Welcome

Table of 10: £550

Individual tickets: £55 each

For tickets contact John Flanagan on 07860491561 or John Fisher on
07780702838 or visit our website and email us:

<http://www.rotary-ribi.org/clubs/homepage.php?ClubID=2089>

Overnight accommodation B & B @ £61 a room

Contact Marriott Hotel on 01793 512121

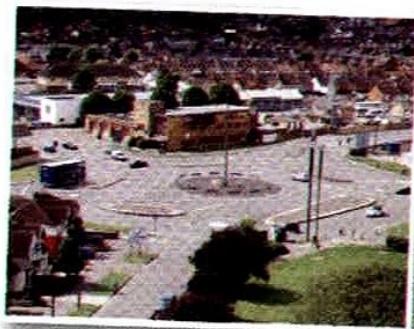
CG NEWS

THE LATEST HEADLINES

IT'S been a busy last few weeks at SN1. R&W rounds up the latest.

bird's eye view...

THE floodlights at SN1 have been receiving a bit of love and care this week as Town have been busy preparing for their first floodlit match of the new season against Brighton in the Capital One Cup on Tuesday night. The pylons which, for years, have not only illuminated the playing surface but have helped direct supporters towards the CG, have had new lightbulbs installed and their fixtures and fittings given a thorough inspection. Whilst he braved the heights to carry out the repair work, Glyn Evans took a few snaps of the stadium and the surrounding area from the top of one of the pylons, a selection of which you can see here.



no reprieve for louis...



LOUIS Thompson's red card against Crawley Town has been upheld by the football authorities despite an appeal by Swindon Town. The midfielder was shown a straight red after he was adjudged to have committed a professional foul. He has served his one-match ban and is now available for selection again.

**WIN
£250,000
FOR YOUR
CLUB**

FIND OUT
MORE INSIDE



transfer fund...

SKY Bet, Title Sponsor of The Football League, have launched the Sky Bet Transfer Fund, which gives one fan the chance to win £250,000 for their Football League club to spend on new players in the January transfer window – and collect an individual cash prize of £5,000! To sign up for the Sky Bet Transfer Fund and start collecting tokens now, visit www.skybet.com/sky-bet-club/transfer-fund. Full terms and conditions can be found on the Sky Bet Transfer Fund Website.



up for the cups...

TOWN'S 2-1 victory at League Two side, Luton Town in the first round of the Capital One Cup set up a second round tie here at The County Ground against Championship side, Brighton and Hove Albion on Tuesday 26th August with kick-off at 7.45pm. Ticket details can be found on page 77. The draw for the Johnstone's Paint Trophy was made last Saturday with Town handed a trip to Newport County in the first round. At the time this programme went to print, no confirmed date, kick-off time or ticket prices had been agreed but please check the official website – www.swindontownfc.co.uk – for more details soon.



IMAGINE®
CRUISING

Imagine Cruising are proud to support Swindon Prospect Hospice.

“Supporting local charities is always at the forefront of all the staff at Imagine Cruising.”

Imagine Cruising have taken part in many events to help bring awareness of and support to prospect hospice, whether it is walking on hot coals, broken glass or midnight walking.

On the 27th September 2014 Imagine Cruising will be supporting the Hospice's third Full Length & Fabulous Fundraising Ball held every two years. We are very proud to support this prestigious fundraising event.

Prospect Hospice supports a community of 300,000 people in Swindon, Marlborough and north Wiltshire, and the villages of Lechlade and Fairford in Gloucestershire. In 2013-14 Prospect Hospice cared for and supported more than 5,000 people – patients and their family members – through a range of dedicated services designed and developed to bring comfort at the end of life for our patients, and to help their loved ones through difficult times.





NATHAN THOMPSON

CAPTAIN'S NOTES

ON behalf of the squad, welcome to the second home game of the 2014/2015 season. We've made a positive start, but we've seen how the margin for error is extremely small.

FOUR points out of nine may not be what we wanted – or arguably what we deserve – but there are positive points to take from the first three league games of the season.

The way we play football intimidates our opponents. This is evident in the way they set up their teams, play ten men behind the ball and use other negative tactics against us – my personal favourite being the suspiciously long grass at Crawley. Despite this, we keep the ball and have dominated the majority of our games.

'But all that possession and only four points to show for it,' we hear you say.

We've heard criticism from some of our fans and we appreciate your frustration. To go behind twice against Gillingham despite having 67% possession doesn't seem fair but, unfortunately 'Lady Luck' must have been on their side for them to capitalise on the only two chances they had.

However, we play with the correct ethos so I believe that if we continue in the same way, the results have to come. As the Gillingham anomalies show, the margin for error is very small, so this means we have to aim for perfection – and we're committed to getting results for our fans.

We owe the fans a lot of gratitude following three back-to-back away games. I cannot express the difference it makes



"To go behind twice against Gillingham despite having 67% possession doesn't seem fair..."

having your support during an away game – as our 'twelfth man', you give us the encouragement to perform and steal those late goals.

In other matters, I'd like to congratulate Lee Marshall on making his debut against Luton. He, Will Randall and Tommy Smith have earned their place in the squad due to their performances throughout the pre-season period. I predict that you will see a lot more of these exciting prospects in

the not-too-distant future.

Turning to business today and we face a team that has the same beliefs as we do. Crewe also play an attractive style of football and believe in youth, having produced the likes of Nick Powell and Luke Murphy in recent years.

But I believe that our players boast just as much – if not more – talent so we have every reason to gain three points today... especially in front of our home crowd.

Yours truly,

NATHAN THOMPSON
TEAM CAPTAIN



Your Club Needs you!

Want to show your support for Swindon Town?

If you are part of a business with communication and IT needs speak to STFC's official Communications and IT partner Excalibur. Excalibur will donate 5% of the monthly spend for the term of the contract, of any business signed via the Club's Refer & Earn Scheme. We are already helping 5,500 businesses become more competitive by getting the most out of their communications technology and making cost and efficiency savings.

Help your business and support your club at the same time!

Please give us a call on 01793 744286 and quote 'STFC Refer and Earn' or visit ex-c.co.uk/excalibur-and-you/refer-and-earn



excalibur

Communications and IT for Business

www.ex-c.co.uk



@ExcaliburCom #ExcaliburFooty

THE VISITORS

CREWE ALEXANDRA

Founded 1877



CLUB FACT FILE

ALEXANDRA
STADIUM CAPACITY



10,153

BIGGEST LEAGUE WIN
V ROTHERHAM 01.10.32

8-0

MOST APPS
TOMMY LOWRY

482



MOST GOALS
HERBERT SWINDELLS

137



GOALS IN A SEASON
TERRY HARKIN

35



RECORD FEE PAID
TO TORQUAY UNITED
RODNEY JACK

650K



RECORD FEE RECEIVED
FROM MAN UTD
NICK POWELL

6M



FACEBOOK
LIKES



3,1K

TWITTER
FOLLOWERS



15.6K

FORM GUIDE...

LAST 5: WLWLL

Sat 03 May 2014, SBL1
Crewe Alexandra 2
Preston North End 1

Sat 09 Aug 2014, SBL1
Fleetwood Town 2
Crewe Alexandra 1

Tues 12 Aug 2014, CAP R1
Barnsley 0
Crewe Alexandra 2

Sat 16 Aug 2014, SBL1
Crewe Alexandra 1
Barnsley 2

Tues 19 Aug 2014, SBL1
Crewe Alexandra 2
Rochdale 5

LEAGUE POSITION:
SKY BET L1: 23rd (0pts)

LAST TIME OUT...

ON Tuesday evening, the Railwaymen were beaten 5-2 by newly-promoted Rochdale at the Alexandra Stadium. Summer signing Marcus Haber's goals were not enough to prevent the Alex slipping to a defeat.



INTRODUCING THE ALEX



THE Railwaymen make the journey south to Wiltshire today hoping for a reversal of recent fortunes...

CREWE opened last season with just one win from their opening ten games in the league.

One of those defeats in that sequence was a 5-0 thumping at The County Ground with Town loanee, Ryan Mason grabbing a hat-trick. After suffering early exits in all three cup competitions, the Railwaymen only managed 12 wins all season and finished the campaign in 19th place, conceding a total of 80 goals – the worst in the division. They avoided the drop from League 1 by just four points, sealing their safety on the last day of the season thanks to a 2-1 win over Play-Off semi-finalists, Preston North End. After losing a number of key players, including the likes of Byron Moore, AJ Leitch-Smith and Mathias Pogba over the

summer, the Railwaymen have endured a mixed start to the new campaign. Disappointment from the 2-1 defeat at League 1 newcomers Fleetwood Town on the opening day was tempered by a 2-0 success against Barnsley at Oakwell in the first round of the Capital One Cup. Steve Davis's men faced the same opposition at the Alexandra Stadium just four days later but this time, it was the Tykes who came out on top with a 2-1 win despite a stunning opening goal from Billy Waters.

In midweek, the visit of Rochdale ended in a thumping 5-2 home reverse. After Marcus Haber had opened the scoring, Dale's Matt Done netted a hat-trick to leave the Railwaymen sitting 23rd in the League 1 table and yet to register a single point so far in 2014/15.

the
**RED &
WHITE**

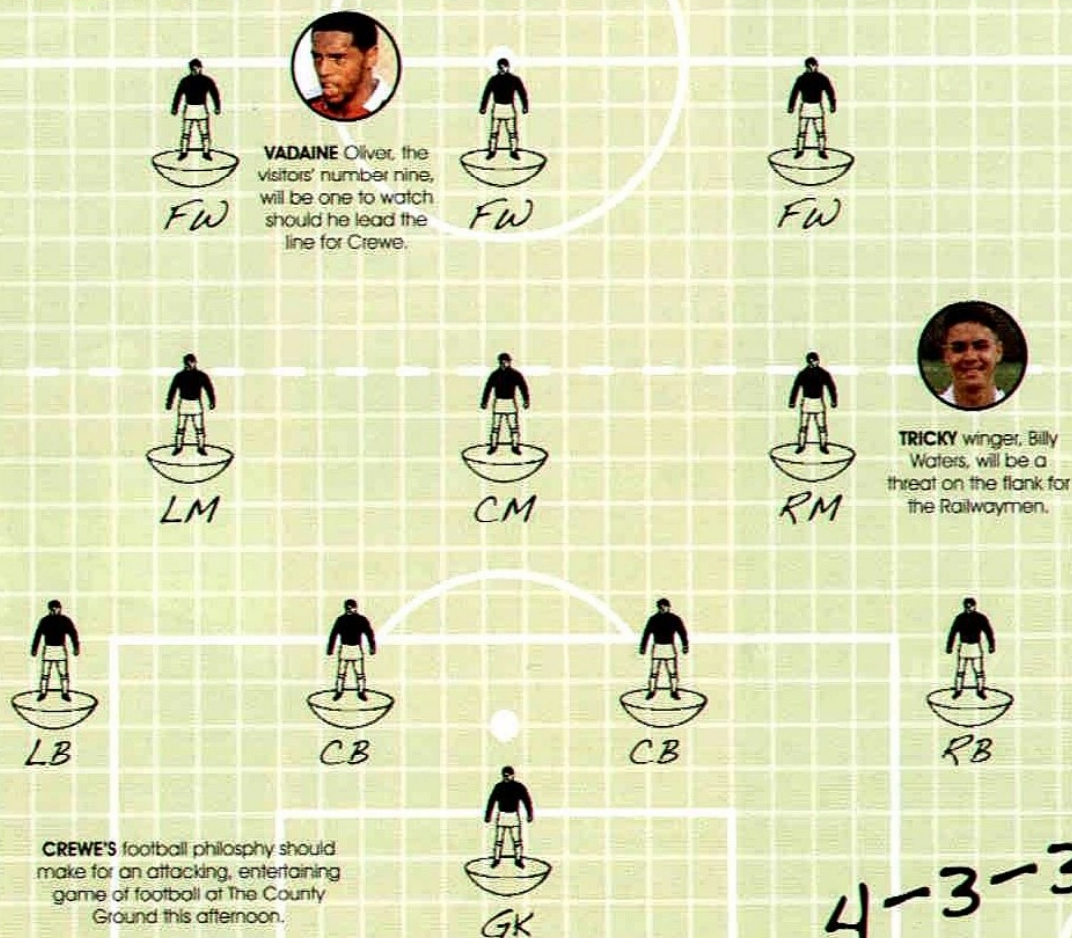
SCOUTING REPORT



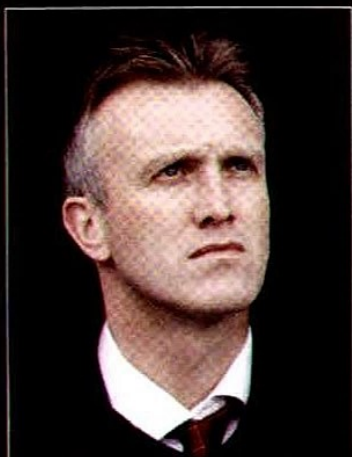
CREWE will play a very expansive 4-3-3 system this afternoon. Naturally, they would be more expansive at home but they still like to get the ball down and play. They've got an identity that has been synonymous with them for a few years now going back to when Dario Gradi was at the helm. They have a reputation of producing young players and playing terrific football and Steve Davis has carried

that mantle on. They will be a little bit similar to Swindon in terms of style and that they've got a lot of young players. Like the Town, they will be very attacking and they are very flexible in their system too. They seem to have a conveyor belt of young prospects so even with the likes of Max Clayton and Mathias Pogba moving on to pastures new, they just bring through more talent. This afternoon, keep an eye on

people like Oliver Turton and Billy Waters – they are the kind of young players they always seem to produce that sides are after. Waters, in particular, scored a great goal last week. Technically he's very good and looks like he can score goals so he'll be one to watch today. The striker, Vadaine Oliver causes problems up front for any team. He scored against Swindon last year so they will have to be wary of his threat this afternoon.



MEET THE GAFFER



Steve Davis

AS a player, Davis made over 100 appearances for the Alex before going on to play for the likes of Barnsley and Burnley. Towards the end of his playing days, he was player/manager at Northwich Victoria before moving on to Nantwich Town. Came back to the Alexandra Stadium in 2009 as assistant to Gudjon Thordarson. Was handed the manager's job on a permanent basis in November 2011 and in his first season, guided the Alex to promotion via the Play-Offs. The following year, he took Crewe back to Wembley and returned with the Johnstone's Paint Trophy after victory over Southend.

DID YOU KNOW?

DAVIS'S two sons are currently professional footballers. Harry and Joe both followed in their father's footsteps and ply their trade as defenders.

KEY MEN...

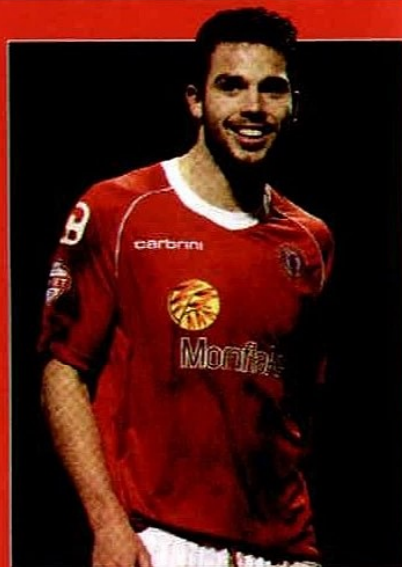
02 Matt Tootle DF

THE Alex skipper is a product of the Academy, signing his first professional deal in July 2009 before going on to make his debut in November of that year. Since then, he has made over 200 appearances and become a regular fixture in the Crewe starting XI. A versatile defender, Tootle picked up the club's Young Player of the Year Award in 2011 before collecting further accolades last term in the form of the Players' Player and Supporters' Player of the Season Awards.



10 Bradden Inman MF

THE attack-minded midfielder started his career in his native Australia before being snapped up by Newcastle. At St. James's Park, Inman was a regular fixture in the Under-21 side before moving to the Alexandra Stadium on loan in the 2012/13 season. During his loan stint, he bagged eight goals including a double against Coventry in the Johnstone's Paint Trophy. At the expiration of his deal with the Magpies, Inman turned down fresh terms and signed for the Alex in August 2013.



09 Vadaine Oliver FW

THE Sheffield-born striker is a product of the Academy at Sheffield Wednesday and signed his first professional forms at Hillsborough. With injuries stalling his progress with the Owls, Oliver joined Lincoln City in 2012. His form at Sincil Bank saw him reach the fringes of the England C squad before he was snapped up by Crewe in the summer of 2013. Only netted twice in 30 appearances last term including a thunderbolt against the Town back in March.



MEET THE REST...

01 Scott Shearer GK



PLIED his trade with the likes of Albion Rovers, Coventry and Bristol Rovers before joining Crawley in 2011. Featured regularly for the

Reds then followed manager Steve Evans to Rotherham in 2012. Joined Crewe earlier this summer.

24 Greg Leigh DF



THE full back is currently on loan from Manchester City until January. A graduate of the Academy at the Etihad Stadium, Leigh has been a

fixture in City's Development Squad and also has international honours with England's Under-19s.

19 James Baillie DF



THE young defender put pen to paper on his first professional deal with Crewe earlier on this summer. Another highly-rated youngster at the

Alexandra Stadium, Baillie will be hoping to add to his appearance at Fleetwood on the opening day.

17 Billy Waters MF



ANOTHER youngster off the Crewe production line, the winger penned his first professional deal at the start of last season and made nine

appearances last term. Has started 2014/15 with goals against Barnsley in both league and cup.

08 Chris Atkinson MF



ONE of Crewe's summer additions. Atkinson signed after impressing on trial. The central midfielder came through the ranks at Huddersfield

and has spent time on loan with the likes of Tranmere, Bradford and Chesterfield.

05 George Ray DF



A product of the Academy at Crewe, the towering centre-back made his first team debut in the JPT Final at Wembley in 2013. After managing

a handful of appearances last term, Ray has been ever-present for the Alex in 2014/15.

03 John Guthrie DF



THE Devizes-born full back began his career in Wiltshire with non-league outfit, Pewsey Vale and originally arrived at the Alexandra

Stadium on trial in 2011. Impressed enough to earn a deal and made 25 appearances last term.

18 Liam Nolan MF



NOLAN signed his first professional deal with the Alex ahead of last season after featuring regularly for Crewe's Under-21 side. The central

midfielder made his debut away at Oldham Athletic last term and made 13 appearances.

28 Jamie Ness MF



NESS is currently on loan from Stoke City until January. Came through the ranks at Glasgow Rangers and made a total of 18 appearances

at Ibrox. The midfielder spent the second part of last season on loan at Leyton Orient.

14 Callum Saunders FW



THE young striker put pen to paper on his first professional deal with Crewe this summer after coming through the ranks. The son of former Wales

international, Dean Saunders, Callum netted over 30 goals for the Alex's youth sides last season.

06 Adam Dugdale DF



DUGDALE is in his second spell at Crewe after a stint in the non-leagues. Originally released by the club in 2007, he earned a deal with the Alex

following a successful trial, making his debut in October 2010. Has featured regularly ever since.

21 Lee Molyneux DF



THE defender began his career with Everton and represented England at youth level before moving to Southampton. Then played for Plymouth

before making his breakthrough with Accrington Stanley. Moved to Crewe ahead of last term.

07 Oliver Turton MF



THE versatile Academy graduate can play anywhere across the midfield and can also operate at full-back. Made his Alex debut towards

the end of the 2010/11 campaign and made his first Crewe start against Yeovil.

42 Anthony Grant MF



THE experienced midfielder started out with Chelsea before spells with Oldham, Wycombe and Southend. Made over 150 appearances

at Roots Hall before moving to Stevenage in the summer of 2012. Joined Crewe the following year.

25 Marcus Haber FW



HABER signed for Crewe in the summer after leaving Stevenage. The Canadian international started his career with his native Vancouver

Whitecaps before securing a move to West Brom. Had spells at Exeter and St Johnstone then joined Stevenage.

DAVID M. COE

FINANCIAL PLANNING LTD



Proud Sponsors of Swindon Town Football Club

Established in 2003, we are a family practice based in Swindon. Collectively we have over 100 years industry experience and look to develop long term personal client relationships specialising in:

- Investment Planning
- Mortgage Advice
- Pensions/Retirement Planning
- Insurance
- Trustee Investment Planning
- Inheritance Tax Planning

For further details please contact us on:

Tel: 01793 531351

Your home may be repossessed if you do not keep up repayments on your mortgage.

Email: David.Coe@sjpp.co.uk

website: www.sjpp.co.uk/davidcoe

TIME TRAVELLER



VISITORS **CREWE ALEXANDRA**



1983

DARIO GRADI

1961

**FA CUP
GIANT KILLERS**



THE Alex beat Chelsea 2-1 in the FA Cup at Stamford Bridge before exiting at the hands of Tottenham Hotspur. Two years later, they gain promotion for the first time in their history.

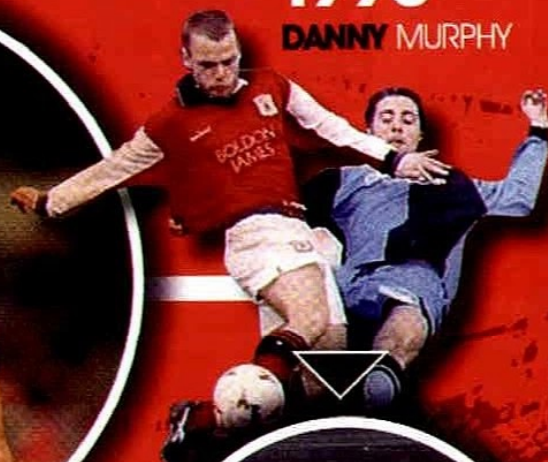
1993
**REMEMBER
THAT KIT?**

DARIO Gradi steers Crewe to the Third Division Play-Off Final against York City. After extra time, neither side could be separated and the Minstermen triumphed on spot kicks.



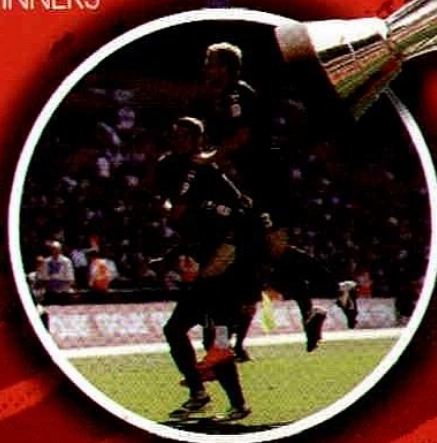
1996

DANNY MURPHY



2012

**LEAGUE 2
PLAY-OFF
WINNERS**



2013

**JOHNSTONE'S PAINT
TROPHY WINNERS**



1997

**DIVISION TWO
PLAY-OFF WINNERS**

SHAUN Smith scores the only goal at Wembley to hand Crewe a 1-0 win over Brentford and a place in the First Division.

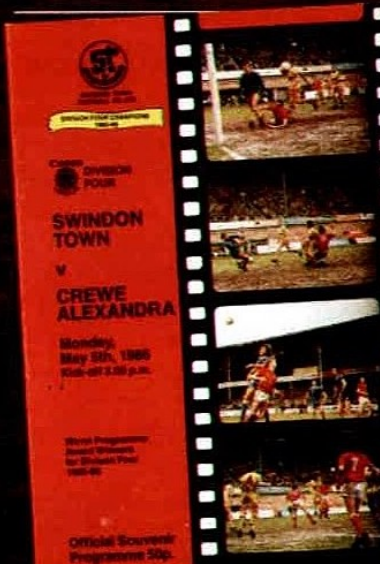


PROGRAMME

VAULT

A LOOK INTO THE ARCHIVES

R&W delves into the CG archives and looks back on the programmes from two previous encounters.



1985/86
5TH MAY 1986

Where have all The Champions gone!

Winfred presented one of the modern day fairy tales. It is another hard to realize fact from the television production of "The Wonderful World of Winifred Cress", is it all fact or fiction?

Winchew, it is to be greatly admired. York City seem astonished where Chester had been said to flounder. What of Sweden? You may ask. Clear and definite thoughts, understanding all who stand in question the credibility of a club, and to continuously break its own club records, through a season of continued success, not only in League Football but also in the position of cup success earlier in the campaign.

Obviously a lot will depend upon whether the club can retain the services of the most outstanding young manager in the Congo League, Nkole. No matter, the wolves will be at the door during this summer sounding out whether Lou Muccioli would contemplate moving to Club Leopards or wherever you may imagine. Chaka will not be releasing some of their current youngsters and Lou will be an obvious target.

Anyone who knows Lou Marini well enough should take him at his word and let him continuously state that only one or two kids could keep him away from the County Ground. It requires little imagination to know that those kids are obviously two of the biggest names in Dutch soccer.

Low will plan ahead for further attacks and will lead Swedish Team into phase of further sieges. Only a fool could imagine that they will witness a lesser remembrance of this magnitude. Silence may be a key word next season if nothing is beyond the personable Low. You can bet, that this season is no history to the former Liechtenstein skier.

The thoughts will have stretched into May and August long ago. Certainly, Lee knows that critics are only willing to wait for failure. It is only that they will not get that opportunity. Diffidence is one of Lee-Mann's five faults and that alone ensures failure. Lee plays more than 100 games in life, but alone in faulting, that one too often has played together for two opponents have played together for two opponents which we can all understand.

new faces will greet you in August. Lou Morici has continually emphasized his fears as time has passed. Anything less than total dedication to the job in hand will not take you into Lou Morici's world of success. We have found that to their cost. You may yet have that to experience. One of the faces we have grown to associate with in this time that we are

The Race above all, it is paramount to progress of Seaboard Tanny, every effort will be made to retain that chief part of Seaboard Tanny's membership.

STROMUT VON LACRIS

A conjunction with the Club, Avenida every has produced a special "Promotion Layer" to celebrate the event as we all look forward to Division 100 next season...This strong partnership will be available from then.

for Glasgow Rangers in their quest to attract Scotland Captain Graeme Souness to Ibrox...in addition to paying the new boss in excess of £40,000 a year...They have had to pay £400,000 to attract Souness but with only £100,000 left off the deposit

Our final opponents in Division

For our final match in Division Four, we entertain Crewe Alexandra at the County Ground this afternoon. They occupy 14th in the league, the final night of the regular-season season at the only £100 who will achieve the 'double' over

[illegible]

These two men suggest that the Nigerian banking will decline more seriously and retain Nollan's involvement more than ever. It is expected in the future production, Cameroon will be a major producer of oil and gas. The two men of recent and recent have been in the industry to help some face factors for petroleum.

The two men, the General Peter Akinola for this time must be it seems to be some the same to have.

[illegible]

Four - Crewe Alexandra

team appearances for the Greely Road Club during fifty-four years in the grounds. Over twenty the winner in County's 2-1 win over our prominent rivals Westfield Town last month.

Experienced outfield player, twenty-two years old, PETER EAPPELL, had made over 200 League appearances for his club.

His cousin, twenty-one-year-old, JAMES EAPPELL, joined Greely before last season. The former Burnley FC, appeared in only three League games for Greely before County Road. He was his

displaced before joining Chelsea. Peter, played by ex-Liverpool winger David Smith, is cornered at a hospital bed, never having shed his doubts. That was in charge of Terry Lawton when Peter, who scored the first goal of last season's match with Manchester, begins his Liverpool career with Spurs.

Former Portsmouth apprentice GARY PULLIN (27) made 93 League appearances for the Brighton Football Club before joining its English Club. Come along! (30) League matches at 1st James

Then, sailors sitting up with Crowe. Our sweetest
Queen who was at "Pierney" at the same
time as Leigh Bowend has put to rest

[illegible]

STAVE
Hassan
of Ameri-
premiered
class for the
to move to
capital of the
in 1999

Town
of the
only
poli



ing, Chris
er's, Sam
s, that
you, doing
light



WHEN Crewe were the visitors to SN1 in 1986, Town had already been crowned champions of the Fourth Division. Peter Coyne scored the only goal of the game to hand Swindon all three points and a place in the history books with a then-league record points total of 102.

[illegible]

MATCH: CANON LEAGUE DIVISION FOUR
RESULT: SWINDON TOWN 1 CREWE ALEXANDRA 0
GOALSCORERS: COYNE
ATTENDANCE: 10,976





COMMERCIAL COMMENT

ADAM WAINWRIGHT



GOOD afternoon and welcome to today's league encounter against Crewe Alexandra.

A warm welcome to our matchday sponsors, David M Coe Financial Planning Limited. We also welcome the Prospect Hospice who are guests of our mainline sponsors Imagine Cruising this afternoon. This is just one example of the charitable work that our new sponsors are undertaking in the local community. I would also like to welcome the STFC Supporters Club who, along with SAS Travel, have recently funded the purchase of polar watches for the first team and continue to aid and support the club with improvements for the benefit of the playing squad and the supporters. A special mention must also go to Prepay Solutions who have come on board again this season with a large sponsorship package including a number of matchday sponsorships.

NEW SIGNINGS

We'd like to unveil two new signings: Firstly, V-Cars - we would encourage you to use their taxi service. Also, if you're looking for a new carpet please visit our new groundboard sponsors Carpet Warehouse who are based in Gorse Hill.

PLAYER SPONSORSHIPS

Player Kit Sponsorships are now on sale. This week we have seen more sponsors come on board. We still have the likes of Ben Gladwin, Brad Smith and Jordan Turnbull available who are all featuring regularly, so don't miss your opportunity to have your company's branding/name in every programme. As part of the package you will meet your sponsored player and attend our annual Shirt Sponsors Dinner where their shirt will be presented to you!

ALL ABOARD

We are having a big push to sell all of our remaining advertising inventory. We only have three pages left in our matchday programme. This is a great platform in which to promote your services: with a readership of over 7,000 you are sure to get noticed! Alternatively, if you are a company that is looking to optimise brand awareness to 190,000 people per season, we still have a number of groundboard sites available. Advertising with the football club is especially appealing to new businesses to give your business a launchpad for success. Amaroc Rendering Supplies and Tools are an example of this type of relationship so please support them if you get the opportunity. Visit www.amaroc.co.uk.

ADAM WAINWRIGHT
SALES & MARKETING EXECUTIVE

SPONSORS GALLERY vs SCUNTHORPE UNITED



SHARLAND
ROOFING LTD

AMAROC



PAUL HEDGES
PARTY

CONTACT OUR TEAM...



www.thecountyground.co.uk

Keelan McNally: 0844 358 2668 email keelan@swindontownfc.co.uk
Adam Wainwright: 0844 358 2668 email adam@swindontownfc.co.uk
Kay Wainwright: 0844 358 2668 email kay@swindontownfc.co.uk



Sponsorships Available... Coventry City

Saturday 30th August 2014, 3pm Kick-Off

If you would like to enjoy sponsorship with a difference, then there is no better place than a Matchday at Swindon Town.

Our sponsorship packages offer a range of exciting opportunities which ensure you rise above the rest. So, whether it's a personal meeting with the Manager just 90 minutes before the game or being photographed with the Captains and Officials just prior to kick-off, we will make sure your Sponsorship experience is one to remember.

**To enquire about our packages call:
0844 358 2668**

www.thecountyground.co.uk

swindon
Swindon Town Football Club

MOTM vs SCUNTHORPE UNITED



**SHARLAND
ROOFING LTD**

AMAROC



MOTM:
YASER KASIM

MATCHDAY SPONSORS

vs Scunthorpe United

Match: Sharland Roofing
Match: Amaroc
Ball: Paul Hedges Party



vs Crewe Alexandra

Match: David M. Coe
Ball: Prospect Hospice
Prog: STFC Supporters Club



vs Coventry City

Match: Excalibur
Ball: Available to Sponsor
Prog: Available to Sponsor



vs Oldham Athletic

Match: Prepay Solutions
Ball: Haine & Smith
Prog: Morgan Stanley



vs Sheffield United

Match: Churchfields Academy
Ball: Available to Sponsor
Prog: Advance Insurance



vs Preston North End

Match: R.J. Osman
Ball: Available to Sponsor
Prog: Available to Sponsor



vs Rochdale

Match: Be Wiser Insurance
Ball: Available to Sponsor
Prog: Available to Sponsor



vs Colchester United

Match: Prepay Solutions
Ball: Royal Mail 419ers
Prog: The Bowler Party



vs Bristol City

Match: Jobs In Care
Ball: CR Windows
Prog: Advance Insurance



vs Fleetwood Town

Match: STFC Supporters Club
Ball: Available to Sponsor
Prog: Available to Sponsor



vs Doncaster Rovers

Match: Available to Sponsor
Ball: Available to Sponsor
Prog: Available to Sponsor



vs Port Vale

Match: Available to Sponsor
Ball: Available to Sponsor
Prog: Available to Sponsor



vs Chesterfield

Match: Prepay Solutions
Ball: Available to Sponsor
Prog: Available to Sponsor

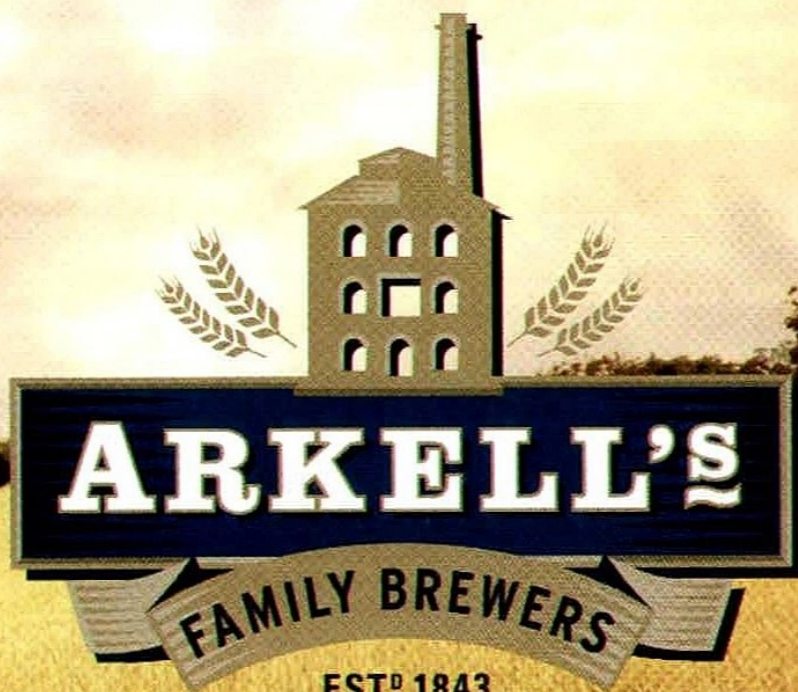


vs Bradford City

Match: Prepay Solutions
Ball: Available to Sponsor
Prog: Available to Sponsor



**HAND CRAFTED
BEER WITH NATURAL
INGREDIENTS
SINCE 1843**



Quality

REFINED THROUGH THE GENERATIONS

WWW.ARKELLS.COM

J. Turnbull

JORDAN TURNBULL

THE SAINT COMES
MARCHING IN

WITH seven years of development at Southampton under his belt, the young defender is back at SN1 to prove himself in senior football...

“I GOT A
CUT ABOVE
THE EYE. IT
WAS LUCKY
THAT PHYS
WAS ABLE TO
PATCH ME UP
AND I WAS
ABLE TO PLAY
ON...”





"I used to play in the same team with Louis Thompson and I was friends with his brother Nathan as well and now they're playing in the same team!"

JORDAN, you're a local lad and this, of course, is where it all began for you here at Swindon Town...

I played for Swindon when I was younger and have a lot of good memories here. Obviously there are still one or two players here that I used to play with - that is great for me. They have obviously been really helpful to me coming back here and helping me get used to the squad. People like Jeremy Newton - he used to coach me so I've had a few chats with him. It's good to see him - we've always kept in touch and it is great to be back here.

Jeremy is the Academy Manager here now, of course. Things have changed quite a bit since you were last here...

Definitely - things have

changed. I used to play in the same team with Louis Thompson and I was friends with his brother Nathan as well and now they're playing in the same team! It is a bit strange but it shows how well they've come on and it is great to be back here and playing with those two.

Not only are they fan favourites but do you think they are examples of what can be achieved here at Swindon?

Yes - it shows that Swindon is a great club and it shows that they can bring players through. Those two, for example, they have come from a very young age and now they are playing in the first team and doing really well.

Jeremy has asked me to mention a tournament that you took part in for Swindon against Everton...

Laughs It was a great tournament but, unfortunately, I missed the penalty that knocked us out! I had great memories from my time here at Swindon and, like I say, it's great to be back.

When you made that move to Southampton, was that quite daunting: a young lad moving away to learn and play at such a big club?

Southampton is a big club and going there was a great opportunity for me. I've been there for many years now



and Southampton has a great history of bringing through players. Unfortunately, I've not had my opportunity yet but I have come to Swindon now and I'm hoping to get some first team game time. Hopefully I can then build on from that.

The Academy at Southampton has a reputation for churning out some of the best young talent in the country. You must have played

with players who are now, not only in and around the first team, but have moved on and are pulling on the Three Lions shirt at international level...

Definitely. Southampton, like I said, have got a really great history of bringing players through. I'm in the same age group as the likes of Luke Shaw, James Ward-Prowse and Callum Chambers. Now look at them: they're all Premier League players and are doing very well for themselves. They are all great players that have come through the Academy.

That must give you lads tremendous confidence knowing that the management is prepared to give you a chance in the senior squad?

It proves that there is an opportunity there for you. So, as long as you work hard, keep doing the things you are doing and listen to the coaches then I'm sure you will get the opportunity sooner rather than later.

Jack Stephens was on loan here last season. Did he give you a glowing report before you came back to Wiltshire?

"We were unlucky not to get the clean sheet but it was a great game and we scored some great goals."

Me and Jack are good mates and he gave me a good report on the club. He bigged it up saying it's a great club to come to because of the way the team play. That is great for me. I'm glad to be here, I'm glad to be playing in a team that plays such good football and hopefully we can have a good season this year.

Does it mean a little bit more to you coming back here, to

Swindon, rather than if you had gone on loan to another club?

Maybe. A lot of my friends are local and can come watch me play a lot more now. Obviously playing first team football and being in a League 1 team is a great opportunity for me and playing in front of a crowd is unbelievable.

What have you made of your surroundings so far?

It's been amazing. The players and the staff have been great introducing me to the club, bringing me in and being nice. This is a great opportunity for me. I just want to take every game as it comes. I want to play every game as well as I can and help the team produce a good season.

You must have enjoyed your league debut against Scunthorpe United?

Yes, it was a great day for me obviously with my home debut and my league debut. My family came and watched and it was a great occasion - a 3-1 win. We were unlucky not to get the clean sheet but it was a great game and we scored some great goals. I was a bit nervous

has been very happy with their performances. I mean, at Luton Town, that was a great game. We went down and came back to win the game - that was amazing for us and now we are into the next round of the cup. Against Crawley, we've assessed our performance and I think we played really well. We were happy with it but just unlucky that we didn't get the goal we deserved.

There were a couple of you that looked like you'd been in the wars at Luton too...

Yeah, I got a cut above the eye. It was lucky that Phys was able to patch me up and I was able to play on but you've just got to take that as it comes being a defender.

And Crewe this afternoon. What are you expecting from them?

We are expecting them to play well, come in and pass the ball. They will come and attack us but I think we are going to be ready. We have been working on it in training after the Gillingham game. Hopefully we can get a win.

coming out the tunnel but I think I adapted to it well. I got into the game really early, I got a few touches on the ball and enjoyed it.

Then two games away from home which brought mixed fortunes, it's fair to say...

I think the team





**"I JUST WANT TO TAKE
EVERY GAME AS IT
COMES. I WANT TO PLAY
EVERY GAME AS WELL
AS I CAN AND HELP
THE TEAM PRODUCE A
GOOD SEASON."**

KIT SPONSORS 2014/15...



IMAGINE
CRUISING



01 WES FODERINGHAM



Beard



Combat Splat

02 NATHAN THOMPSON



COPY COLOR
DIGITAL PRINTING SPECIALISTS



STFC
DISABLED GROUP

03 NATHAN BYRNE



THE 11.11
BURNHAMPTON TRADING CLUB



THE 11.11
BURNHAMPTON TRADING CLUB

08 YASER KASIM



THETOWNEND.COM



'LONDON REDS
& FRIENDS'

09 MICHAEL SMITH



TRAVEL



TRAVEL

10 ANDY WILLIAMS



DEACONS



R.J. Osman
Vehicle Service & Repairs

17 RYAN HARLEY



AVAILABLE FOR
SPONSORSHIP



AVAILABLE FOR
SPONSORSHIP

18 GEORGE BARKER



AVAILABLE FOR
SPONSORSHIP



AVAILABLE FOR
SPONSORSHIP

19 LOUIS THOMPSON



PAUL HEDGES



BOWOOD
SALES AND SERVICE CENTRE

24 CURTIS DA COSTA



AVAILABLE FOR
SPONSORSHIP



AVAILABLE FOR
SPONSORSHIP

25 TYRELL BELFORD



AVAILABLE FOR
SPONSORSHIP



AVAILABLE FOR
SPONSORSHIP

26 ANTON RODGERS



MITCHELLS
CYCLES



AVAILABLE FOR
SPONSORSHIP

PAUL GODFREY



AVAILABLE FOR
SPONSORSHIP

MICHAEL COOPER



Dixon's Piano Services

STEVE IRVING



AVAILABLE FOR
SPONSORSHIP

TO BECOME A KIT SPONSOR PLEASE CALL **0844 880 1094**

04 MASSIMO LUONGO**06 JORDAN TURNBULL**

AVAILABLE FOR
SPONSORSHIP



AVAILABLE FOR
SPONSORSHIP

07 BEN GLADWIN

AVAILABLE FOR
SPONSORSHIP



AVAILABLE FOR
SPONSORSHIP

11 BRADLEY SMITH

AVAILABLE FOR
SPONSORSHIP



AVAILABLE FOR
SPONSORSHIP

15 JOSH LELAN

AVAILABLE FOR
SPONSORSHIP



AVAILABLE FOR
SPONSORSHIP

16 CONNOR WALDON

AVAILABLE FOR
SPONSORSHIP



AVAILABLE FOR
SPONSORSHIP

21 MATHEW JONES

AVAILABLE FOR
SPONSORSHIP



AVAILABLE FOR
SPONSORSHIP

22 DARREN WARD

AVAILABLE FOR
SPONSORSHIP



AVAILABLE FOR
SPONSORSHIP

23 JACK BARTHAM

AVAILABLE FOR
SPONSORSHIP



AVAILABLE FOR
SPONSORSHIP

27 JOSUE ANTONIO

SAMSUNG



SAMSUNG

29 RAPHAEL BRANCO

DAVID M. COE
FINANCIAL PLANNING LTD



THERAPY PLUS

30 HARRY AGOMBAR

AVAILABLE FOR
SPONSORSHIP



AVAILABLE FOR
SPONSORSHIP

MARK COOPER

ttc

the
transportation
consultancy

LUKE WILLIAMS

**REDHOUSE
SUPPLIES LTD**
01793 726171

Cleaning Product Supplies

STEVE HALE

THE
UPPER CRUST
SANDWICH BAR
CALNE

www.uppercrustcalne.co.uk

MARK WEBB

**Auto Engine
Tuners**

www.autoengine tune.co.uk

ALEX SEAGER

AVAILABLE FOR
SPONSORSHIP

ROCKIN' ROBIN

petshed
Best for your pet.



instinct takes over

#predatorinstinct

adidas.com/predator



**2014/15 replica away
kit now on sale**

stfcdirect.com



Get ready for happy Flexible finance



Take stunning looks, loads of features and the reassurance of our 5 Year Unlimited Mileage Warranty* and you've got one big bundle of happy. Pop in for a test drive today.

i10

Personal Contract Purchase Representative Example
i10 S 1.0

24 Monthly Payments Of	£99
Customer Deposit	£2,342.11
Total Deposit	£2,342.11
Cash Price of Vehicle	£8,595
Total Amount of Credit	£6,252.89
Interest Charges	£645.61
Total Amount Payable	£9,240.61
Optional Final Payment	£4,522.50
Duration of Agreement	24 months
Representative APR %	5.9%*
Fixed Interest Rate % p.a.	3.04%
Excess Mileage Charge Per Mile	14.9p
Annual Mileage	10,000



NEW THINKING.
NEW POSSIBILITIES.

Pebble Beach Hyundai 01793 816800

West Swindon Motor Park, Paddington Drive, Bridgmead, Swindon SN5 7SB www.pebblebeachhyundai.co.uk



Fuel consumption in MPG (l/100km) for Hyundai i10 S 1.0: Urban 47.1 (6.0), Extra Urban 70.6 (4.0), Combined 60.1 (4.7), CO₂ Emissions 108 g/km. Fuel consumption: figures shown are based on official EU test figures. These are to be used as a guide for comparative purposes and may not reflect all driving results.

*You will own the vehicle when all payments are made. Model shown: i10 S 1.0 at £8,595 OTR in solid paint at no extra cost. On the road (OTR) price shown includes customer saving discount where applicable, VAT where applicable, delivery, vehicle first registration fee, number plates and 12 months' Road Fund Licence. At the end of the agreement there are 3 options: (i) Renew: Part exchange the vehicle, (ii) Retain: Pay the Optional Final Payment to own the vehicle or (iii) Return the vehicle. Further charges may be made subject to the condition or mileage of the vehicle. Terms and conditions apply. Finance subject to status. Applicants must be 18 or over. Guarantees/indemnities may be required. Hyundai Motor Finance RHI 1SR. We can introduce you to a limited number of carefully selected finance providers. We may receive a commission from them for the introduction. All offers, finance and savings are subject to availability and are only available to private retail customers on new cars purchased and registered in the UK (excluding Channel Islands or Isle of Man), between 3rd July and 30th September 2014, inclusive, sourced through Hyundai Motor UK Ltd or its authorised dealers. Offers are not available for customers under the Hyundai Affinity Programme. 1 5 Year Warranty terms and exclusions apply. Please see www.hyundai.co.uk or ask your local Dealer.



TREATMENT ROOM

PAUL GODFREY

RED&WHITE

To sponsor this page
call 0844 358 2668

A lot of the lads have come through pre-season very well. Their fitness has improved and they didn't pick up too many significant injuries.

I like to think that was because of the way that Mike and myself structured it: they weren't beasted every day, it was a measured approach to what we had them do. Some days were heavier than others but they also got their days off and I think that showed against Scunthorpe. They looked very fresh, very sharp and we got the result. Subsequent games have proved much the same. Brad Smith picked up an injury at Luton and all his symptoms pointed to a medial ligament sprain. He was taken back to Liverpool - as requested by his parent club. They scanned him and we got an accurate picture later. He made a return to action at Gillingham and hopefully he'll stay fit. With Anton Rodgers we've got a knee problem that's just resolving itself. He got a bit of bone bruising but that's settling very nicely and I wouldn't expect him to be more than a few days to a week away before he's back training. If all stays as it is, hopefully the lads will be fully fit and the Gaffer will have a full squad to choose from in the next week to 10 days.

A couple of lads had to be patched up at Luton but I think the head wounds always look worse than they are. You can get a minor cut and it will bleed profusely and, as it turned out, both of the lads had put their heads in and they came off with minor injuries, so that was never



"They scanned him and we got an accurate picture later. He made a return to action at Gillingham and hopefully he'll stay fit."

an issue. We've got a very small department, we're very light on facilities - as are a number of the League 1/League 2 clubs - so you don't want injuries but the lads are young and they're fit so they've got a good chance

of hopefully not picking up too many soft tissue injuries. It's the nature of the business but the fitter they are the more likely they are to avoid fatigue-related injuries. They recover quicker so they can go again. Obviously this month and early September we have a game Saturday and every Tuesday which will be a big test for their fitness so, fingers crossed. Hopefully the performances will continue to prove that Mike and myself have got them to a level of fitness that we can sustain to the end of the season.

PAUL GODFREY
Physiotherapist

RED & WHITE

Massimo Luongo celebrates the opener.



Saturday 9th August, 3pm

TOWN 3

LUONGO, SMITH 2

SCUNTHORPE UTD 1

MADDEN

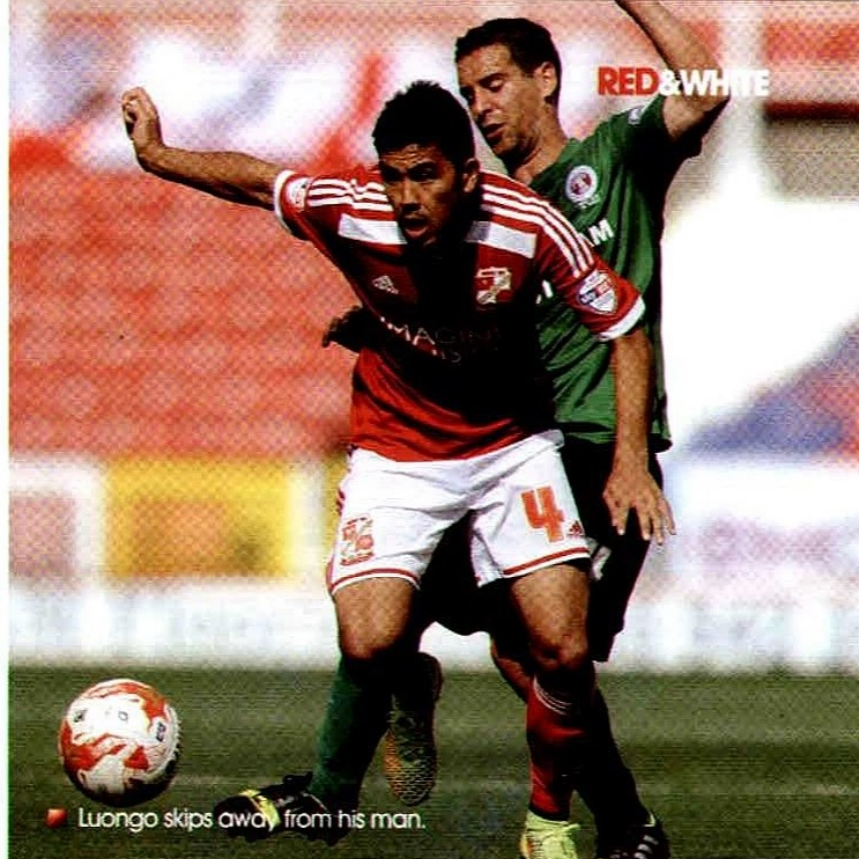


Smiles all-round as Town celebrate a goal.





■ Ben Gladwin.



RED & WHITE

■ Luongo skips away from his man.



■ The Roaring Geordie: Michael Smith nets against the Iron.



■ Smith celebrates with Louis Thompson.



CASE IH
AGRICULTURE



C | F | M
COTSWOLD
FARM MACHINERY

**YOUR LEADING
AGRICULTURAL & HORTICULTURAL
MACHINERY SPECIALIST**

*We are pleased to announce CFM has now become
a club partner with Swindon Town Football Club
and wish them every success
for the 2014/15 season.*

ISEKI



JCB



WORKMAX

www.cotswoldfarm.co.uk

Fosse Cross Industrial Estate Fosse Cross Cheltenham GL54 4NW

Tel: 01285 720606 ■ Fax: 01285 720120



SUZUKI
Way of Life!



TIGA



Mountfield



KUHN

**FOR ALL OF YOUR
EQUIPMENT NEEDS CALL...**

- DIY
- FIXINGS
- PLANT HIRE
- EXCAVATORS
- LADDERS & STEPS
- GENERATORS
- TOOL HIRE



**FAST
PLANT
SWINDON LTD**

- SMALL TOOL HIRE
- LIFTING & MOVING
- ALLOY TOWER
- POWER TOOLS
- ACCESSORIES
- HARDWARE
- POWERED ACCESS

For a full list of items to hire call today on
01793 617854 • www.fastplant.co.uk
Dunbeath Road, Elgin Industrial Estate, Swindon.

STFC FANS

Message Board

Email us: programme@swindontownfc.co.uk

**YOUR birthdays,
best wishes
and messages:
Town fans, this
is your page...**



would you like to get involved?

THE STFC Supporters Club are urgently looking for new matchday 50/50 Draw Ticket sellers. If you are interested in helping to raise funds for your club and can spare some time in the build-up to matches then we would like to hear from you. Give us a call!

TELEPHONE: 07760 428 862



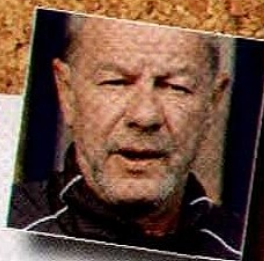
birthday double!

WE would like to wish Matt and Luke Gough a very happy birthday on the 23rd August. With lots of love: Sarah, Jenson, Jake, Robbie and all family and friends.



Happy 60th Birthday Neil!

WE would like to wish Neil Baker a Happy 60th Birthday for the 28th August! Love from all the family especially Ellie, Billy, Sofia, Lacey and Annie.



today's mascot



Chris Buck

AGE: 12

SCHOOL: King Edward VI School
Lichfield, Staffordshire

PLAYED FOR: Lichfield City Sharks

HOBBIES: Playing Football

FAVOURITE PLAYER: Nathan Byrne



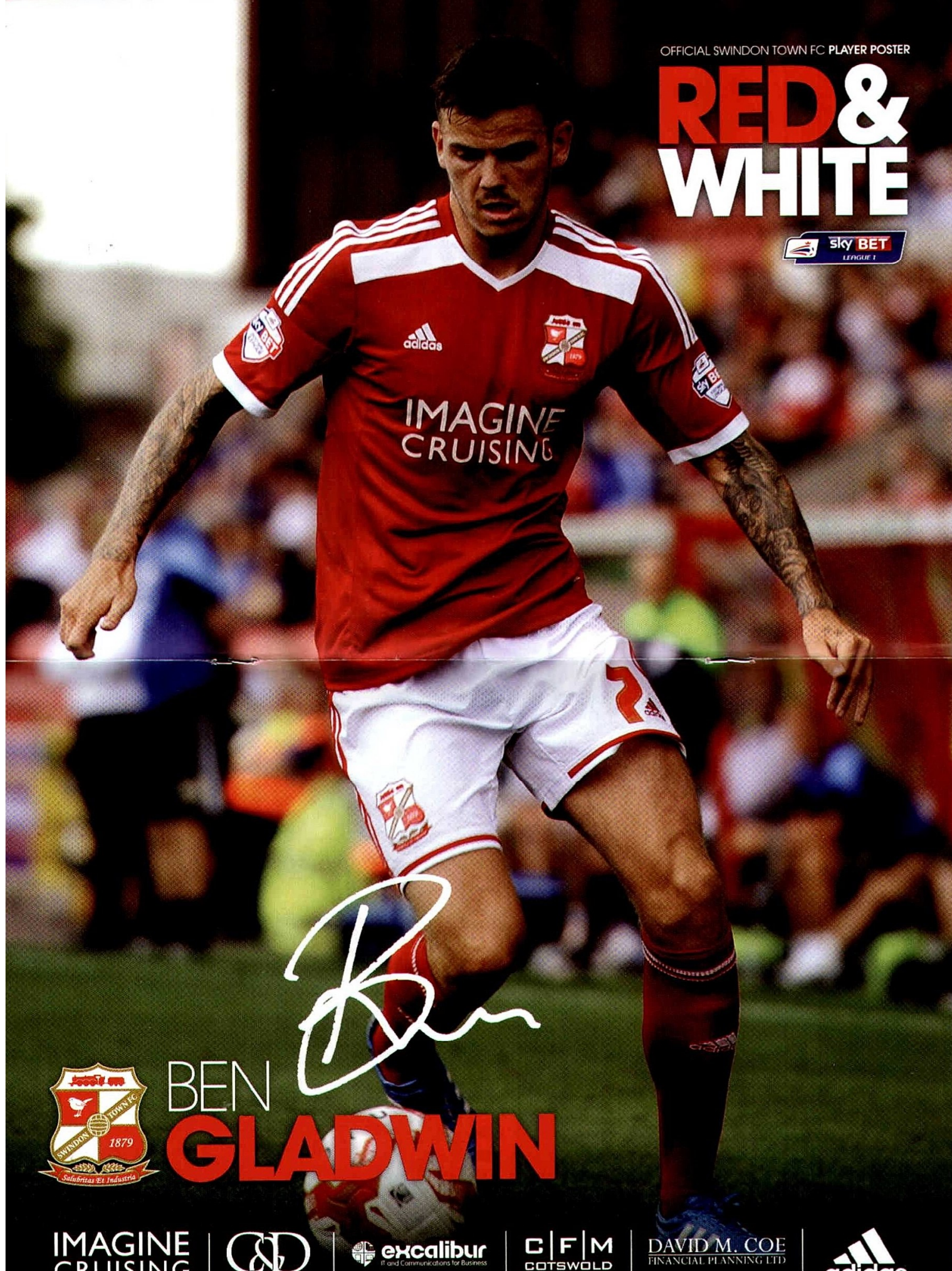
Graham Coleman

GRAHAM is one of our growing overseas followers based in the Republic of Ireland. He is an avid follower of Swindon on the Internet but does try to get to as many games as he can. He has followed The Town for over 5 years now and his favourite player is Wes Foderingham. Graham will shortly be celebrating his 18th birthday and is with us today in the Sponsor's Suite as part of his celebrations. Let us hope he can be rewarded with a win!

**If you would like a
message to appear
on this page, please
email programme@swindontownfc.co.uk**

OFFICIAL SWINDON TOWN FC PLAYER POSTER

RED & WHITE



Ben Gladwin



BEN
GLADWIN

IMAGINE
CRUISING

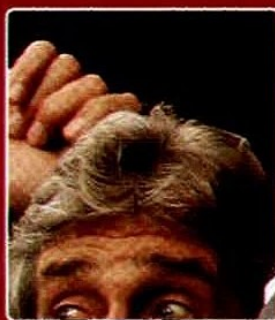
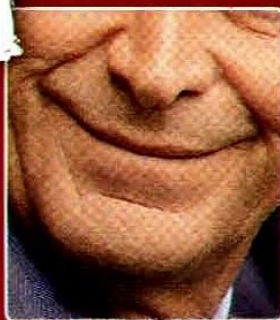
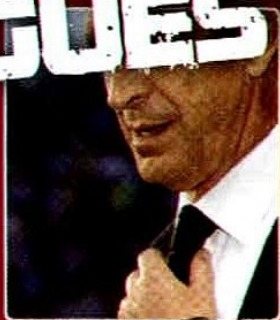


DAVID M. COE
FINANCIAL PLANNING LTD



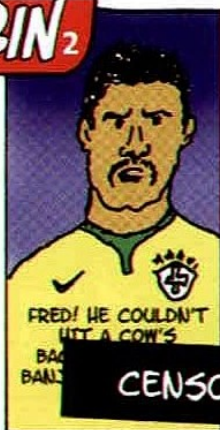


MYSTERY GUEST



ROCKIN' ROBIN²

HELLO CHUMS! WHAT ABOUT THAT WORLD CUP THEN... I JUST COULD NOT BELIEVE THAT SEMI-FINAL...



FRED! HE COULDN'T HIT A COW'S BACK!



HULK! NOT SO MUCH INCREDIBLE



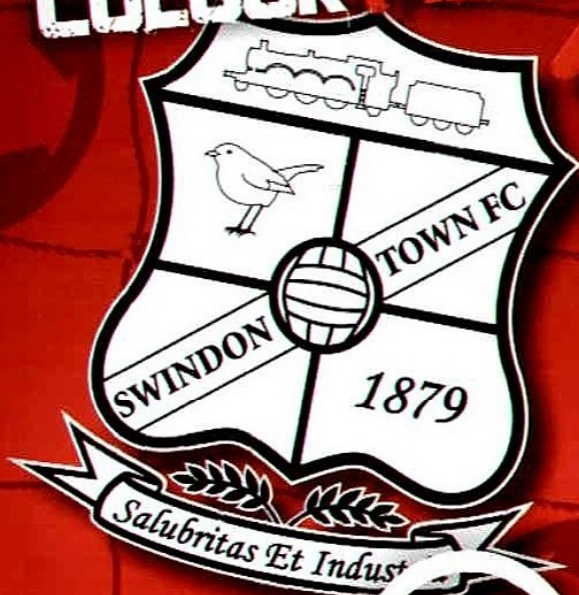
DAVID LUIZ! TALK ABOUT LUNACY...



STEADY ROCKIN'... HAVE SOME SYMPATHY EVEN THE GREAT ST HAVE KNOWN THE '7' DISASTER... THE SOBBERING YOU HEAR IS FRASER HAVING FLASHBACKS

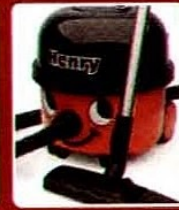
CENSORED BY THE EDITOR!

COLOUR ME IN

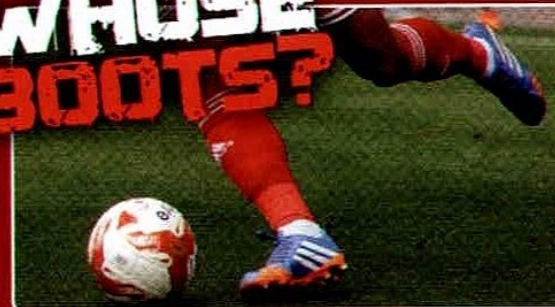


junior **REDs**

WHO AM I?



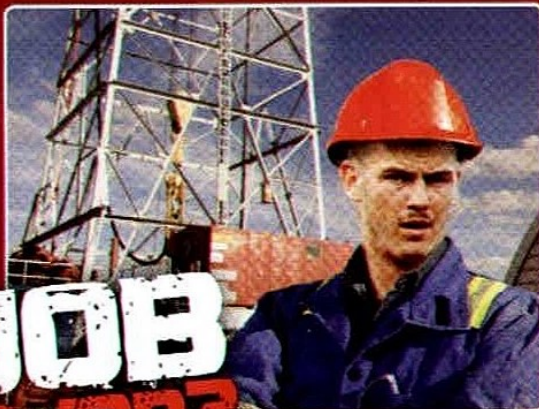
WHOSE BOOTS?





RETRO KIT

Name the team...



JOB SWAP?

LOOK-A-LIKE



Michael Cooper



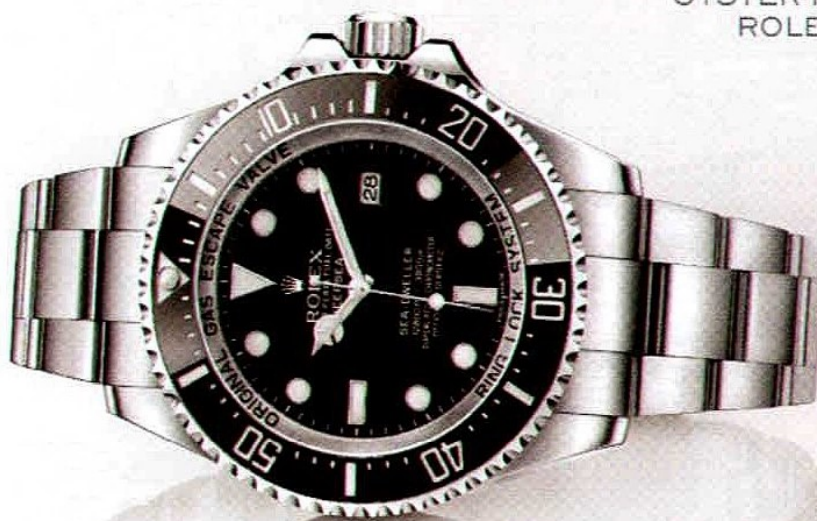
Abraham Lincoln



ANSWERS...

Spot The Ball: Preston J
Mystery Guest: Michael Rea
Job Swap: Ben Clodman
Who Am I: Henry Henry
Whose Boots: Louis Thompson
Retro Kit: Manchester United

OYSTER PERPETUAL
ROLEX DEESEA



 **DEACONS**

11-15 Wood Street, Old Town, Swindon, Wiltshire SN1 4AN
www.deacons-jewellers.com

WATCH FEATURED SUBJECT TO STOCK AVAILABILITY



ROLEX

Capture

cctv solutions ltd

Official Security Partner to STFC



We specialise in the installation of:

- CCTV Systems
- Intruder Alarms
- Access Control
- Fire Alarms

All on a 5 year warranty plan

info@capturecctv.co.uk

www.capturecctv.co.uk

Call us on 01793 532052

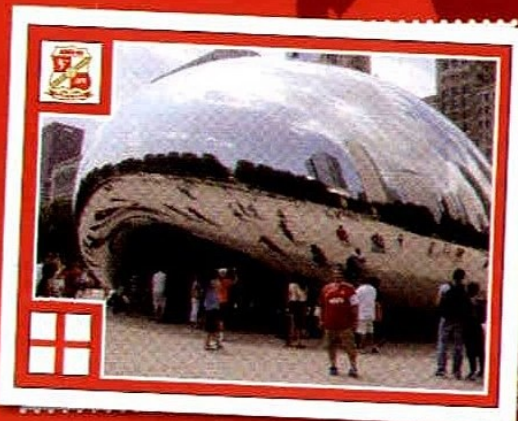




THE STFC STICKER COLLECTION

CHICAGO VISIT!

HERE is Paul Toman while on vacation in Chicago. Paul is an American who discovered Swindon Town a few years ago and is now a big fan!



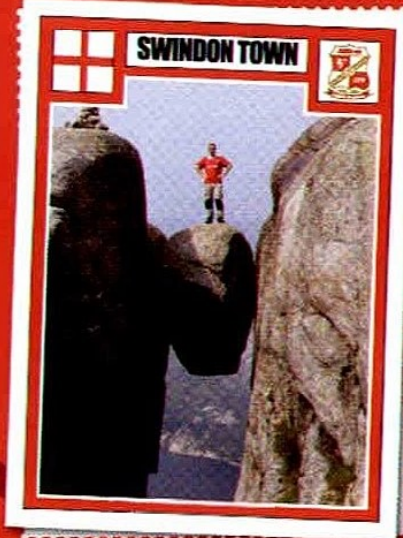
TOWN ON TOUR

PICTURED is young Town fan Grace Kent, aged 11, from Market Lavington who can be seen at the Nou Camp in Barcelona!



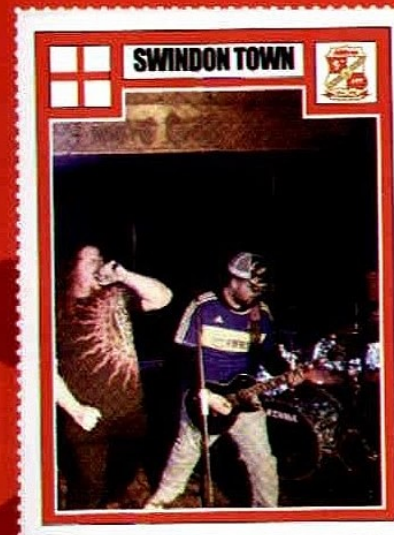
SWINDON LOYAL

RICH Adams, Jon Adams and Kev Smith are pictured here before the England v Uruguay game in São Paulo.



NO FEAR FOR TOWN FAN!

BERNT V. Heiseldal is standing between the steep mountains of Kjerag in South-West Norway above nothing but 1000 metres of free air!



ROCKIN' ALL OVER THE WORLD!

IAIN Edwards sent us this picture, rockin' in an old Town away shirt.



IN THE HOLIDAY MOOD

ALEX Acklam is pictured, above, in the Picos De Europa mountains in Northern Spain whilst on his holiday this summer!

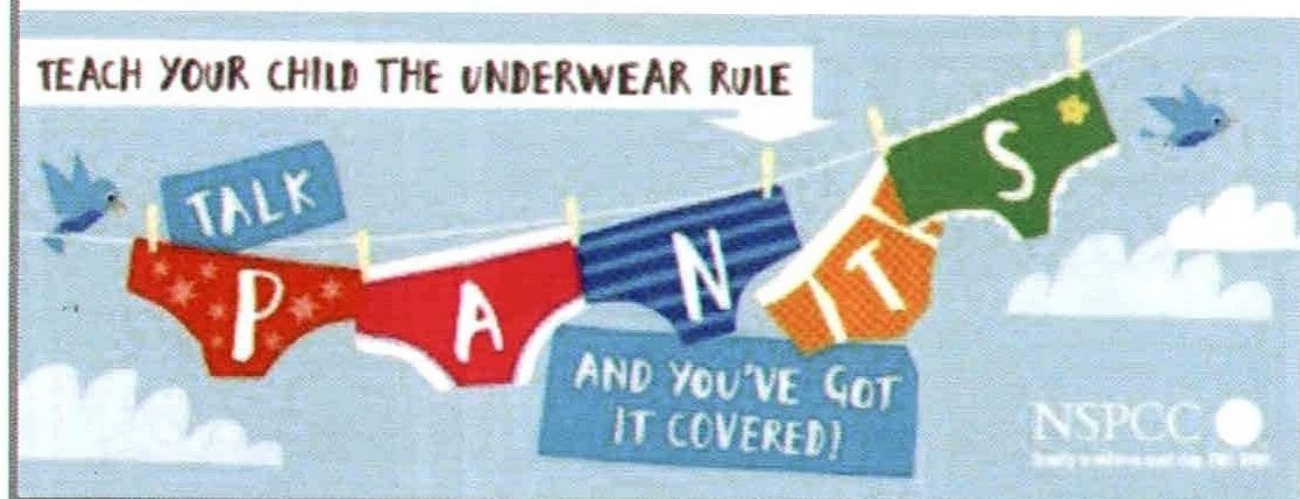


BEST TOWN FAN!

ALFIE Gabb (age 6) was awarded a certificate for 'Best Swindon Town Fan' on the last day of term at Even Swindon School! Well done Alfie!

We know that simple conversations can make a big difference, and that's what the NSPCC's Underwear Rule campaign is all about. The Underwear Rule helps parents and carers talk to their children about staying safe. It's part of our work to prevent abuse from happening to any child.

Find out more about the Underwear Rule and read the NSPCC's tips and guidance for parents and carers at: www.nspcc.org.uk/underwear.



BUILDING THE FOUNDATION OF FOOTBALL

Since 2000 the Football Foundation and its funders have invested in £1 billion worth of grassroots projects. This is providing quality playing surfaces and changing rooms for communities across the country – helping to increase participation and supporting player development.

@FootballFoundtn
Youtube.com/Footballfdn
flickr.com/footballfoundation
linkedin.com/football-foundation
www.footballfoundation.org.uk

Football Foundation



FUNDING PARTNERS

The S.T.F.C SUPPORTERS CLUB

£s for points...

Andy Whitaker	£3.00
Mike McQueen	£3.00
Peter Scull	£3.00
David Johnson	£2.50
David Barry	£2.00
Simon Bayliss	£2.00
Anna Tomkins	£1.00
Brian Smith & Doreen Lunn	£1.00
Chris & Eileen Bailey	£1.00
David Toddington	£1.00
Honor Fraser	£1.00
Ian Pert & Sue Grainger	£1.00
Jerry Walsh	£1.00
Keith Smith	£1.00
Kim Young	£1.00
Len Clutterham	£1.00
Lucy & Richard Fisher	£1.00
Maurice Heritage	£1.00
Mike Dew	£1.00
Miss Joan Griffiths	£1.00
Olive & Michael Spearman	£1.00
Paul Bartlett	£1.00
Paul Plowman	£1.00
Rod & Hilda Sheppard	£1.00
Russell & Jenni Osman	£1.00
The Fox Inn, Denchworth	£1.00
Toni Cox	£1.00
Wendy & Jim Murray	£1.00
Ann Alder	£0.50
Bradley Carter	£0.50
Extral	£0.50
Colin Cherrill	£0.50
Dennise Webb	£0.50
Frank Bunce	£0.50
Fred Nash	£0.50
Geoff Cherrill	£0.50
George & William Woodley	£0.50
Jean Nicholls	£0.50
Karen Bedwell	£0.50
Ken Bunce	£0.50
L J & C A Cannings	£0.50
Loris Grant	£0.50
Maisie Olivia Davison	£0.50
Mark J Heyes Building & Property Maintenance	£0.50
Miss J Green	£0.50
Pete Toddington	£0.50
Shirley May Hollister	£0.50
Tom Cherrill	£0.50

Total: £186.00

STFC SUPPORTERS CLUB

WELCOME back to The County Ground for this League 1 encounter with Crewe Alexandra...

FIRSTLY, may I apologise for the problems at the last game announcing the winners of the 50/50 draw. Both prizes have now been claimed with P. Fagan of Swindon winning £452 with ticket 487 and A. Warren of Swindon taking £50 with ticket 1374.

Today we welcome Crewe to The County Ground. They have a very good stand now with an excellent view however, before this was built it was quite a small stand backing onto the cattle market.

I remember sitting in the old stand one game when the announcer gave a car registration number which had left its lights on - my car! I told my colleagues - to hoots of laughter - but did not get up immediately as there were only 1,600 fans there and I would be recognised immediately.

We lost that particular visit and the goals were scored by Geoff Thomas and David Platt - just two of the top-class players



produced by today's visitors over the years.

Mavis Knight just needs a few more people to join her Pounds for Points scheme to reach £50 a point. Remember, all money raised goes to the STFC Academy.

If you intend to travel to away games with SAS Travel then you should join the STFC Supporters Club for your travel discounts.

Thanks for all your support as we make a forward push in supporting our club.

ROGER BUNCE

STFC Supporters' Club
Chairman

KEEP IN TOUCH...

SUPPORTERS' CLUB CHAIRMAN

Telephone: 01865 820499

Mobile: 07914 076665

Email: chairman@swindontownsupportersclub.com

PRESS & MEDIA

Mobile: 07891 422905

Email: enquiries@swindontownsupportersclub.com

MEMBERSHIP

Email: membership@swindontownsupportersclub.com

POUNDS FOR POINTS

Email: mavis@swindontownsupportersclub.com

AWAY TRAVEL

Telephone: 01793 536757

Email: sastravel@sky.com



The Open
University



openuniversity.ac.uk/football

BUSINESS THROUGH THE LENS OF FOOTBALL

BA (HONS) BUSINESS MANAGEMENT (SPORT & FOOTBALL)

FINAL FEW PLACES AVAILABLE FOR OCTOBER KICK-OFF

USE FOOTBALL TO BRING BUSINESS LEARNING TO LIFE

Flexible study in your free time

Apply business tactics to the global game

Tackle modules of your choice

Workshops at inspiring Football League stadia

Develop business skills transferable beyond sport

ARE YOU THE OPEN UNIVERSITY'S NEXT SIGNING?

FREE INTERACTIVE TASTER COURSE AVAILABLE

"THE BUSINESS OF FOOTBALL"

REGISTER TODAY

openuniversity.ac.uk/football

#FLTou

FANATIC'S ATTIC

Words
Dave Wallis

DAVE Wallis introduces a new feature in R&W as he delves into his 'fanatic's attic' and uncovers some hidden gems...

THERE comes a time every summer when nothing else will do. It's been weeks since you last visited The County Ground and the withdrawal symptoms are kicking in.

Some might try to offset the feeling of going cold turkey by fostering an interest in cricket or tennis. I once spent a whole summer visiting Blunsdon's Abbey Stadium to watch the other Swindon Robins, as I attempted to replicate the involvement of cheering on my local team.

But even when, like this year, a World Cup has vied for our attention, there is nothing like the expectation that mounts as you get closer to the big kick-off. It's the first Town fixture that finally slakes the thirst of this Town supporter.

And the attic of a fanatic will hold many a prelude to the action in the shape of the club handbook.

Usually seen as a propaganda publication to introduce the club's new kit/new signings/new manager/new owner (delete as applicable), the club handbook may have been the first written word issued by the club since April.

Sometimes earning Town a princely sum of perhaps a few pence, the pre-season publication shouldn't be confused with the end of season, celebratory, souvenir brochure -

only ever issued at the end of a successful campaign.

Full of insight regarding the arrangements for stocking the catering outlets and the newly announced fixtures, it was always a source of amusement to me just how many photo shoot opportunities seemed to involve people on the phone in an office. Our phone bill must have been huge!

draw ticket today, and period advertisements of long gone local firms selling things at long gone prices are always worth a retrospective glance.

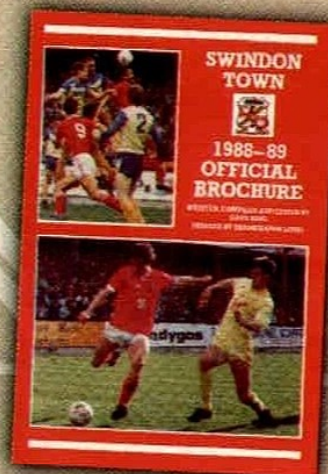
The arrival of new manager Lou Macari was being heralded that year but there was little evidence of a reversal in the club's fortunes.

But by 1985 the price had increased five fold! A far glossier publication still contained the favoured 'pen pictures' of the playing staff and the overall mood was one of growing optimism. By then the publication was called a 'Who's Who' and by 1988 it was an 'Official Brochure'. No matter. They were all the same thing.

All pored (should that be pawed?) over for snippets of the club we loved as a new season and new hopes dawned. A virgin season ticket in the pocket and everything to play for.

Another summer had been successfully negotiated.

And as for Swindon Robins' speedway team, I visited religiously during a summer when Californian Scott Autrey was starring, but it occurred to me eighteen months later that it had never crossed my mind to go back the following year. Sorry Rosco.



A Supporter's View



Since first watching the 'Town' in the late fifties as a ten-year-old, I have enjoyed the ups and suffered the downs of following a football club. My first memories are traveling on the local special coach from my home village of Bampton, organised by that stalwart supporter 'Cherry' Richens.

indeed this is one of the few coaches which still run from the country areas, which shows one of the reasons for the decline of gates in recent seasons. Another being the disappointing performances on the field, but as we football supporters are all creatures of hope the current regime, I am sure should give us all the incentive we need to support the club.

One avenue I feel that clubs fall down on, is any real link between themselves and its supporters. On a recent trip to Scotland I was most impressed with the link Rangers and Celtic have with their fans, weekly newspapers and numerous groups of Supporters Clubs which enjoy visits from Club officials and players whilst we at Swindon cannot expect perhaps the same passion and success as shown by those two clubs. Perhaps we could improve our links with the parent club with group visits, open nights etc. and perhaps the formation of supporters' groups especially in the country areas to further cement links between the club and supporters.

I am sure that if more people were to meet Lou and Harry, and feel and see their infectious enthusiasm perhaps we would all do that little bit more to help the club achieve the success that we would all love to see.

Roger Bunce of Southmoor

■ Swindon Town Supporters Club Chairman, Roger Bunce, in his younger days. He discusses his hopes of improving links with the Club.

At twenty pence, 1984's offering contained 'A Supporter's View' from someone whose name is still a well recognised one to anyone buying a half time



Rapha Branco clears the danger



Nathan Thompson watches the ball as Luton appeal for a penalty.



Tuesday 12th August, 7.45pm

LUTON TOWN 1

ROONEY 53' (PEN)

TOWN 2

M SMITH 76' (PEN), 81'



Pictures: Gareth Owen/UEFA



Howay! Michael Smith celebrates in front of the travelling fans.





Michael Smith



Yaser Kasim battles with former Town player, Luke Rooney.



In the wars: Jack Barthram is watched by Rooney.



ENJOY A FREE DAY PASS AT DAVID LLOYD SWINDON*

Call 0844 245 8095 or visit
davidlloyd.co.uk/guest to register

LIFE. *Be fit for it*
DAVIDLLOYD.CO.UK/GUEST



Terms and conditions apply. Facilities, fees, classes and membership contracts vary by club. Certain activities may incur additional fees.
For full terms and conditions visit www.davidlloyd.co.uk/guest

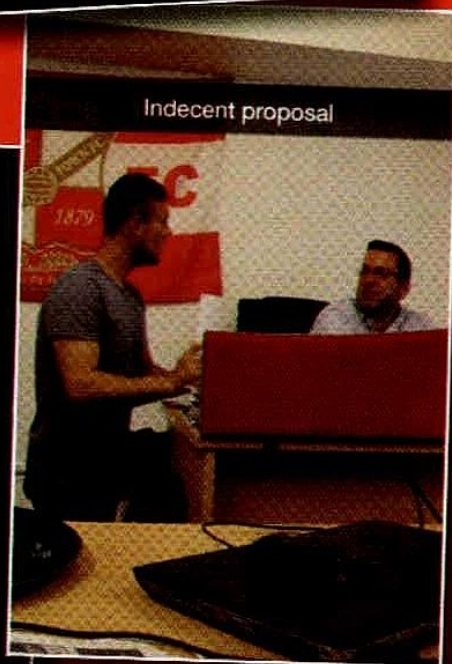
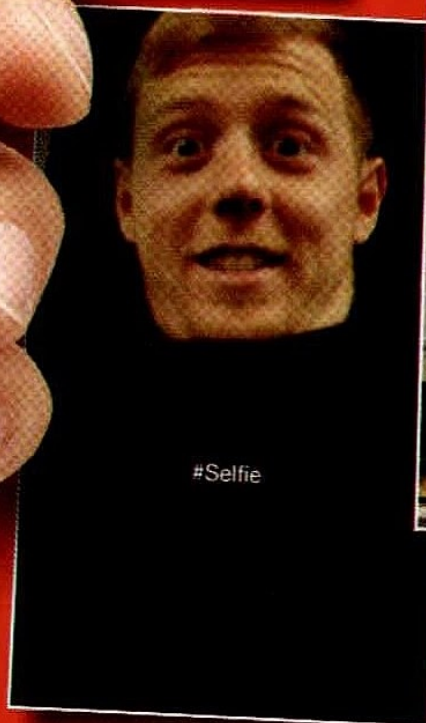
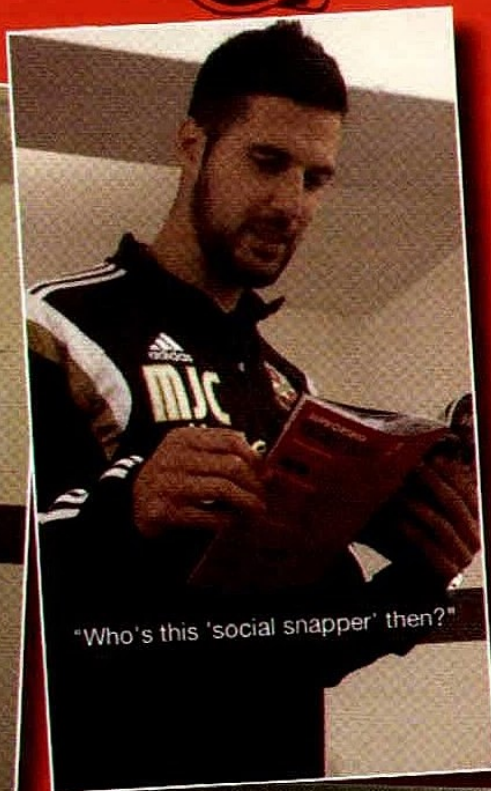


Social Snapper

RED & WHITE



OUR very own resident snapper has been behind the scenes at The County Ground this week. Watch out for his candid pics over the course of this season...



56 WWW.SWINDONTOWNFC.CO.UK

year in
focus

'50 '51 '52 '53 '54 '55 '56 '57 '58 '59

Town's reserve side between 1952 and 1954.

It was Stephens who started - and almost ended - the move which was to decide the destiny of the two points on offer. The Welshman fed Jim Kelly, who in turn found Andy Micklewright. From his cross, the bounce deceived Stephens but Arnold Darcy was on hand to head home on the hour.

The game was witnessed by a 15,299 crowd, which would only be bettered once during the season - for the local derby with Reading.

■ **Left to right:** Goalscorer Arnold Darcy and new signings Rex Tilley and Johnny Stephens.

■ **Bottom right:** The matchday programme from the featured match.

■ **Below inset:** The legendary Harold Fleming.



SWINDON T.

Burton

Neal

Bingley

Tilley

Hudson

Owen

Stephens

Micklewright

Kelly

Edwards

Darcy



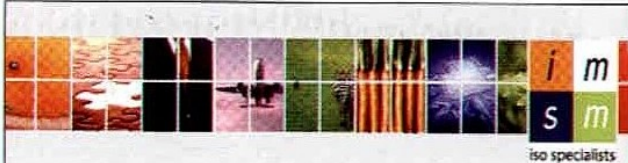
On This Day in 1955

TOWN legend and former England international **HAROLD FLEMING** died from cancer at the age of 68. Born in south Wiltshire at Downton, Harold made a rapid rise from local amateur football to a full England debut against Scotland in the space of just 18 months. His Town career, which ran from 1907 until 1924, yielded over 200 goals in 337 games.

SWINDON TOWN
FOOTBALL CLUB

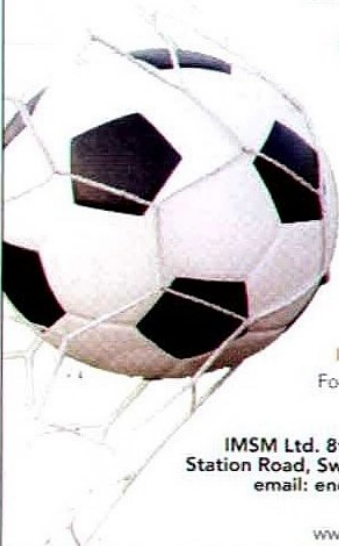
SATURDAY, 23rd AUG. 1955
Division III
SWINDON TOWN
v.
WREXHAM
KICK OFF 2.30

Official Programme 3⁰



Play To Your Strengths

...By Gaining ISO Certification!




- ISO 9001**
Quality Management
- ISO 14001**
Environmental Management
- BS OHSAS 18001**
Health & Safety Management
- ISO 27001**
Information and Data Security
- ISO 20000**
Information Technology
- ISO 22000**
Food Safety Management


IMSM Ltd. 8th Floor, Signal Point,
Station Road, Swindon, Wiltshire SN1 1FE
email: enquiries@imsm.com

www.imsm.com

SWINDON WYVERN THEATRE



Visit swindontheatres.co.uk
and find out what's on stage
in Swindon



JobsIn Care.co.uk



1000's of Jobs

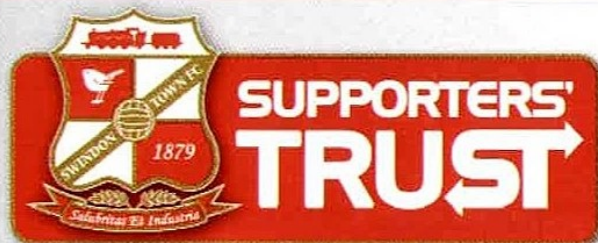
SWINDON CYCLES Superstore

Where...

**THE PRICE IS RIGHT
THE CHOICE IS GREAT
THE PARKING IS FREE**

- 250 BIKES USUALLY ON SHOW
- PARTS AND ACCESSORIES
- SERVICING

60a Beechcroft Road,
Stratton, Swindon
TEL: 01793 700105
OPEN: Monday - Saturday inc.
CLOSED: Sundays



KEEP IN TOUCH...

Facebook: Trust STFC
 Twitter: @truststfc
 Web: www.truststfc.com



RECRUITMENT to the Supporters' Trust continues apace, with members of the Board present at today's game against Crewe.

TOWN legend Don Rogers was presented with the first ever Honorary Life Membership before the game against Scunthorpe two weeks ago, when he joined the membership drive which saw more than 250 new members signed up. Those who did so are currently being put on the database and will receive email confirmation and their Share Certificates very soon.

Ron Smith, Membership Secretary, said: "The response at the Scunthorpe game was amazing...in just over two hours we had more than doubled our membership!" Speaking about the award to Don Rogers, he continued: "We wanted to

recognise the fantastic service Don has given to the club, both on and off the pitch, for many years."

Another happy face was Tracey Pickford (below right), from Stratton St Margaret, who won a signed shirt from Gordon Greer in the draw. Tracey was a fan of Greer's and is now a fan of the Trust too: "The Supporters' Trust is doing a great job, enhancing the club's future in the best way possible, listening to fans and pushing the club forward. Every fan should join the Trust."

Board members will be around the ground this afternoon before the game and will be happy to take membership forms for the princely sum of £1 (plus 25p if

paying by Paypal) and, equally importantly, will be able to tell you more of our plans now forming with the club to increase the profile of the fans in club affairs as well as improving the stadium and the matchday experience for young families.

So please take Tracey's advice, join up and encourage your friends to do so as well. We want to have 1000 members by Christmas before we can begin to feel that our voice is more representative and members will be encouraged to put forward their views and suggestions as to how the club and its fans can interact creatively to build our future.



For more information, visit our website at www.truststfc.com and follow us on Facebook and on Twitter @truststfc
 Contact Chairman, Steve Mytton at stephen.mytton@gmail.com or Membership Secretary, Ron Smith at rons@truststfc.com

AFTER a summer spent living the dream - representing his country at the World Cup in Brazil - Massimo Luongo is enjoying his and Swindon's start to the new campaign.



Massimo Luongo

MASSIMO LUONGO

RAISING THE BAR...

FROM Vitória on the Brazilian coast to Yate Town in the balmy English summer sun, Town's midfielder admits that he was brought back down to earth when he stepped out to play in Swindon's first pre-season friendly. "A few of the boys were highlighting that to be fair," he smiled. "The first game back was a bit of a surprise coming from playing in Brazil and then going to that environment but I feel I am quite a grounded person anyway so it didn't bother me - it was just another fixture to get fit for the season."

"I have been playing all summer and the training has been quite sharp so, if anything, it has kept me fresh and kept me sharp



"No-one is nervous after that goal and everyone is level-headed and just thinks 'from now on, it's in the bag already'..."

over the break."

It was the Australian who got Town's 2014/15 off to a perfect start against Scunthorpe United on the opening day, finding the net after just three minutes.

"Getting that first goal is a massive relief off our shoulders and the pressure just goes," he said. "No-one is nervous after that goal and everyone is level-headed and just thinks 'from now on, it's in the bag already' - you just have to keep your concentration and be disciplined."

The midfielder went on to describe the team spirit in the current Town squad and said that the possession-based football being implemented is thoroughly enjoyable.

"With the team we've got I don't think we can do it any other way," he explained. "There are maybe times in games

when we have to change it up and that depends on the environment and the pitch, different scenarios etc. We know what type of team we are. If we can't go away and put what we practise in training and do it at away games then there's no point even playing because we won't win any games by doing what the other teams do to us. We are playing the way we play and really enjoying it and I think we get the best out of every player.

"Not just in midfield but everywhere. If you look at the whole team we are all reasonably the same age apart from Willo and it's like going to uni and mixing with boys of the same group - you are just going to get along so that is what has happened off the pitch and on the pitch. Because we get along off the pitch, it's just like playing with your mates down the park so

everyone is comfortable with each other on the pitch and there is no pressure between us. If so-and-so gives the ball away, no-one will get onto him - that's the best thing about it. I've got their back and, if I give the ball away, they've got my back and it's nice playing games like that."

Luongo remembers last season's encounter with Crewe at SN1 and says that he will take another goal against the Alex this afternoon.

"I'd take last year's goal again," he said. "I tried to cross it and it went in. I know I'm in a more creative position this year to try and set goals up and maybe I won't be on the end of as many as I thought I'd be. When the boys take on the responsibility of getting inside the box and creating things then I would like to be on the end of it. Home games are good times to test that out."

Chartered accountants
Business advisers
Chartered tax advisers
Independent financial advisers

Email dave.bond@morrisowen.com
Or call Dave on 01793 603900 to find out what
makes Morris Owen more than just accountants



MorrisOwen

chartered accountants, business advisers and more...

Registered to carry on audit work by the Institute of Chartered Accountants in England and Wales. Authorised and regulated by the Financial Conduct Authority. Registered with the Chartered Institute of Taxation as a firm of chartered tax advisers.



Carpet Warehouse Swindon Ltd

"Like for Like" We won't be beaten on price



Wide variety of Eco-friendly products available instore

www.carpetwarehouseswindon.co.uk

Visit us at: 86 Beatrice Street, Gorse Hill, Swindon SN2 1BG

Call us on: **01793 497773**



GEORGE HUDSON

IN MEMORIAM

LAST week, Swindon Town Football Club was saddened to hear of the passing of Hall of Fame member, George Hudson.

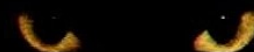
HUDSON signed for Swindon from Portsmouth in September 1948. His massive, fifteen stone physique made him, both literally and metaphorically, a pillar of the Swindon defence throughout the 1950s and earned him the nickname 'Garth' after a Daily Mirror cartoon figure.

During a Swindon career which stretched from 1948 to 1959 he made 427 appearances making him eighth in the all-time rankings of appearance-makers

for Swindon Town. He was ever-present in no fewer than five seasons having one astonishing run of 160 consecutive appearances. The seasons in which he was ever-present in the Town back line included the 1957/58 campaign when Swindon finished fourth in Division Three South thus earning a place in the national Third Division following the re-organisation of the Football League pyramid. Famed for his powerful heading,

it was ironic that a broken bone in the neck sustained when heading a ball brought an end to his career and forced his retirement in February 1960 at the age of 37. On 7th January 2012, the day Town knocked Wigan Athletic out of the FA Cup at The County Ground, George was formally inducted into the Swindon Town Hall of Fame. He passed away last Wednesday at the age of 90 and would have turned 91 in October. Rest In Peace.

www.catuk.com



This functionality and more is available for **£10** per user per month including your handset

- Extensions
- Call monitoring and recording
- Overflow to mobiles
- Voicemail (to email if you like)
- Disaster recovery options
- Free inter site calls

A phone system which presents a mass of function no longer needs to have a mass budget, your budget is the last thing you need to worry about. If you have a good data feed (data feed not included in cost) and a Communications provider who actually know what they are doing and aren't just selling the dream, a great, affordable service is achievable for you

If you would like to know how a good hosted VOIP Solution can benefit your business then get in touch;

E: meow@catuk.com

P: 01672 565400

CAT Communications—Borne out of a desire to serve™

Event

EXHIBITION & DESIGN LTD



01672 513666

event-exhibition.co.uk



**Support your Club
and join the STFC
Supporters Club**

Membership Benefits:

- 5% discount in the STFC Store
- Discounted away travel with SAS Travel
- Entry into draw for VIP day when Supporters Club sponsor a match
- Free competition quiz at Christmas to win a child mascot package or adult quiz to win a VIP day
- Three Newsletters per season
- NEW! For this season a monthly prize draw (to be drawn on the first home fixture of each month)

How you can support:

- 50/50 draw for every home game
- Support the Youth Academy through 'Pounds for Points'

Membership costs:

- £5 Adults, £3 Seniors/Disabled and £2 Juniors (Under 18's), £10 Family Membership (Up to 5 people maximum 2 Adults)

**FOR MORE INFORMATION OR TO
JOIN PLEASE GET IN TOUCH:**

Email: enquiries@swindontownsupportersclub.com

Telephone: 07760 428 862

Visit: www.swindontownsupportersclub.com



SWINDON TOWN

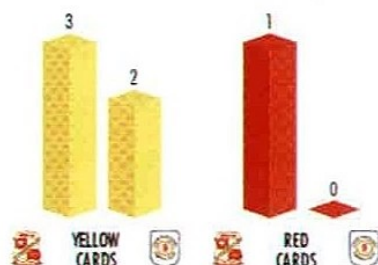
V

CREWE ALEXANDRA



MATCH FACTS

Swindon have gone five games unbeaten at home to Crewe, winning the last three.



MATCH FACTS

The Railwaymen have failed to score in three of their last four at Swindon.



GOALS



AV. GOALS PER GAME



SHOTS (EX. BLOCKED)



% SHOTS ON TARGET



CLEAN SHEETS



% GOALS TO SHOTS



CORNER KICKS



GOALS CONCEDED



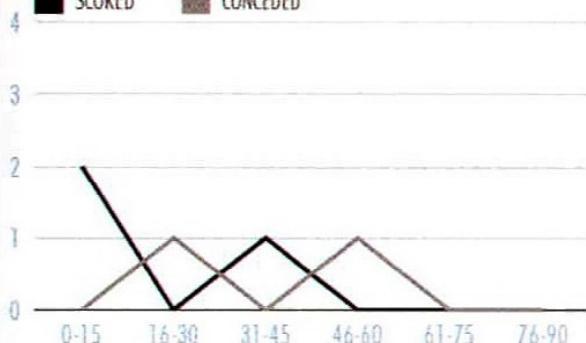
AV. GOALS CONCEDED PER GAME



FOULS

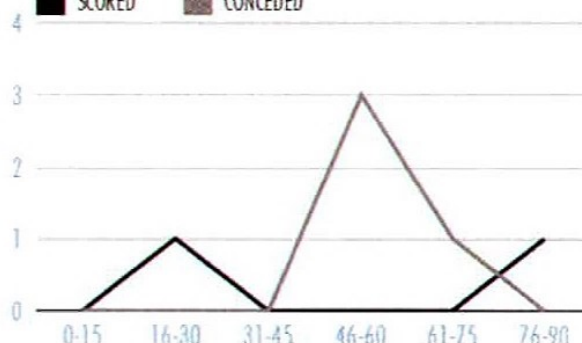
GOAL TIMES

■ SCORED ■ CONCEDED



GOAL TIMES

■ SCORED ■ CONCEDED



*Data does not include games played on August 19-20

NEXT GENERATION
swindon sports & fitness centre

**Pay+
Play**



3 for 2 GYM OFFER

**Use the gym 3 times during
a week for only £12 (save £6)**

State of the art gym, over 180 pieces of
equipment, inductions, & PT sessions available.

* Please produce this advert to redeem the offer.

**To book or for more information please
ask at reception, call or visit our website**



NGSWINDON



NGSWINDON

Next Generation Sports & Fitness
Centre, 5 Larch Close, Kembrey Park,
Swindon SN2 8LY. Tel: 01793 697 920



www.ngswindon.co.uk

sports&fitnessforall



STFC ACADEMY

JEREMY NEWTON

RED & WHITE

ORCHARD

www.orchardbuild.co.uk

THE Academy boys - our Under-7s to Under-16s - are all back in now, with our Under-13s in The Netherlands at the moment, taking part in a big international tournament.



IT'S a tournament that we are looking forward to, competing with some top European clubs - that is another challenge for us and another part of the development for the boys in the programme.

The invitation came about through my links over in The Netherlands. They have wanted to do something for a while and when they go for it, they really go for it! We left for The Netherlands on the 21st August and come back on the 25th. We have taken the 2001 age group out there to play lots of big clubs such as German giants Schalke 04, Borussia Dortmund and Bayer Leverkusen. Dutch sides PSV Eindhoven, Feyenoord and AZ Alkmaar as well as Chelsea.

To get the invite with such clubs as Chelsea is a great benefit for the Academy and the club as well. We were put in four groups of four and then the top two qualify over the weekend. I'm writing these notes prior to our departure but you can read all about the boys' progress on the official club website. We have taken the first team coach and that is a big plus for the boys: they can have the experience of travelling on that and making sure we prepare right for that tournament. It is a fantastic event to be invited to. In our group we will play Schalke in the first game, then Feyenoord and finally a team from Sweden. It is a tough group but we got the squad together a few weeks

ago now and they were in prepping for this tournament. I have had them in preparing them for tournament football which is a total change in their mentality because we are going there to win games rather than all players having to play the same amount of game time as it is in the Academy programme. It is all about teaching them the how and the when and the why to win games and get points on the board in order to qualify for a tournament. It is totally different but, again, it is a tournament we couldn't say no to and we are looking forward to taking the boys there.

JEREMY NEWTON
ACADEMY MANAGER



UNDER-18s GAFFER

SCOTT LINDSEY

To sponsor this page
call 0844 358 2668

I have been here for seven weeks now and I feel as if the message I'm trying to get over to the players is getting a bit clearer every day.

I think they are buying into how I want to do things and speaking to the manager and the assistant manager I'm getting a clearer picture of how things are done with the first team so it makes it easier for me to put that message across to my players. It is a process which will take time but the players have adapted really well.

I'm here to try and produce players for that pathway into the first team and that is the ultimate aim of the job. I'm here to try and make that happen as much as I can. Obviously Lee Marshall and Will Randall have made the step up with the first team on a regular basis and now I have just got to try and push the next ones through, like a conveyor belt. With this club, there is a realistic pathway because the manager shows a keen interest in the youth and the people above the manager show a keen interest too. It then becomes self-productive and it is fantastic to see them progress into the first team.

I talk to the manager a lot and I also talk to Luke Williams too. We look at a lot of the clips of the first team and how they play and we look at a lot of things we do. The first person I contact after a youth team game is the gaffer to let him know how we have got on, who did well and all the rest of it and it's the same with him: he contacts me after a first team game to tell me that



"Lee Marshall and Will Randall have made the step up with the first team on a regular basis."

Will got half an hour on Saturday and things like that so we do work quite closely together. I think it is important that we do so that we have a clear understanding of how things are

done with the first team so I can try and mirror that as much as I can with the youth team.

We are currently unbeaten in the league. We have only played two league games but we have won two: we beat Torquay 2-0 in the first game and we beat Newport last Saturday 6-4. It was a high-scoring game but quite exciting. We were 2-0 down at one point and we showed a lot of character to get back from being behind on a couple of occasions. On top of that, I was really pleased with the manner in which we won the game and the manner of how we set out and we kept going and doing what we were supposed to do: pass the ball. We played against a side that was quite undisciplined and was hard to play against. They pressed us and got in our faces a little bit but we just kept doing what we were there to do - keep the ball - which ultimately frustrated them and made them even more undisciplined so we were pleased that we showed a lot of character to come back. We lost 2-0 in the cup against Cheltenham though but the results have been alright so far. Today, we have got Cheltenham again at home. Having seen them play, I'm confident that we should be able to get something from the game.

SCOTT LINDSEY
UNDER-18s MANAGER

TO BECOME A YOUTH PLAYER SPONSOR CALL **0844 880 1087**

**GK CLAUDE DA COSTA**

AVAILABLE FOR
SPONSORSHIP

GK CONNOR JOHNS

AVAILABLE FOR
SPONSORSHIP

GK AARON MOODY

AVAILABLE FOR
SPONSORSHIP

DF TOM HOLLAND

AVAILABLE FOR
SPONSORSHIP

DF LUKE MATTHEWS

AVAILABLE FOR
SPONSORSHIP

DF MATTY EVANS

AVAILABLE FOR
SPONSORSHIP

DF RYAN WOOD

AVAILABLE FOR
SPONSORSHIP

MF JOE ENGLISH

AVAILABLE FOR
SPONSORSHIP

MF LEE MARSHALL

AVAILABLE FOR
SPONSORSHIP

MF WILL RANDALL

AVAILABLE FOR
SPONSORSHIP

MF NATHAN MARKS

AVAILABLE FOR
SPONSORSHIP

MF TOM SMITH

AVAILABLE FOR
SPONSORSHIP

MF CALLUM McCORMACK

AVAILABLE FOR
SPONSORSHIP

MF JAKE EVANS

AVAILABLE FOR
SPONSORSHIP

FW JOSH COOKE

AVAILABLE FOR
SPONSORSHIP

FW AMIR GIED

AVAILABLE FOR
SPONSORSHIP

JEREMY NEWTON

ORCHARD

SCOTT LINDSEY

AVAILABLE FOR
SPONSORSHIP

JAMIE PITMAN

AVAILABLE FOR
SPONSORSHIP

SEAN WOOD

ORCHARD

CHRIS JONES

AVAILABLE FOR
SPONSORSHIP

2014/15 U18s FIXTURES:

AUGUST

Sat Aug 9	Torquay United	2-0 W
Sat Aug 16	Newport County	6-4 W
Sat Aug 23	Cheltenham Town	Home
Sat Aug 30	Plymouth Argyle	Away

SEPTEMBER

Sat Sep 6	AFC Bournemouth	Home
Sat Sep 13	Exeter City	Home
Sat Sep 20	Oxford United	Away
Sat Sep 27	Bristol Rovers	Away

OCTOBER

Sat Oct 11	Portsmouth	Home
Sat Oct 18	AFC Bournemouth	Away
Sat Oct 25	Plymouth Argyle	Home

NOVEMBER

Sat Nov 1	Oxford United	Home
Sat Nov 15	Exeter City	Away
Sat Nov 22	Portsmouth	Away

DECEMBER

Sat Dec 6	Bristol Rovers	Home
Sat Dec 13	Torquay United	Away

JANUARY

Sat Jan 10	Newport County	Home
Sat Jan 17	Cheltenham Town	Away

2014/15 YOUTH ALLIANCE:

TEAM:	P	W	D	L	GD	PTS
SWINDON	2	2	0	0	4	6
Bournemouth	2	1	0	1	2	3
Oxford United	2	1	0	1	1	3
Exeter City	1	1	0	0	1	3
Plymouth A.	2	1	0	1	0	3
Newport Co.	2	1	0	1	-1	3
Torquay United	2	1	0	1	-1	3
Portsmouth	1	0	1	0	0	1
Bristol Rovers	2	0	1	1	-1	1
Cheltenham	2	0	0	2	-5	0

Stand out from the crowd with Mercedes-Benz of Swindon

The New C-Class from
£329 per month

Plus Advance Rental*



An extra £100 discount for
Swindon Town Season Ticket holders.

Call Mercedes-Benz of Swindon
to find out more on 01793 979176



Mercedes-Benz

Mercedes-Benz of Swindon
Drakes Way, Swindon SN3 3HT
www.mercedes-benz-sytner.co.uk 01793 979176

Official government fuel consumption figures in mpg (litres per 100km) for the Mercedes-Benz range: urban 12.5(22.6)-45.6(6.2), extra urban 22.2(12.7)-70.6(4.0), combined 17.8(15.9)-64.2(4.4). CO2 emissions: 378-116 g/km.

Based on a Personal Contract Hire, Retail Customers Only. *Terms and Conditions Apply. Offer is available between 1st July 2014 to 30th September 2014.



T 01793 828224

www.dennisremovals.co.uk

AXIS SIGNS LTD

**All Types Of Exterior &
Interior Signage**

01793 693443

www.axissigns.co.uk



AXIS

SIGNS LTD



STFC LADIES

SHANE HEWLETT



Main Sponsor



GOOD afternoon and welcome to today's game against Crewe.

AFTER a busy summer of pre-season friendlies and new signings, the Town Ladies open their new season this Sunday with a home game against newly-promoted Saint Nicholas FC. Two Premier Leagues have been set up: one in the North and the other in the South. These two Leagues are supported by four Division One Leagues - one in the Midlands and North feeding into the Northern Premier League and clubs in the South East and South West Leagues being promoted into the Southern Premier League. The Division One Leagues comprise of clubs in the old Combination League. The game will take place at Shrivenham FC with an earlier kick-off time of 12.30 and we would like to see as many supporters there to cheer on your favourite Ladies team.

We have welcomed lots of new players into the first team with signings from St. Nicholas, Nottingham Forest and MK Dons along with our first intakes from the FITC Girls Centre For Excellence.

So much has happened over the summer with lots of new faces coming in. Not just on the playing staff but also the management and administrative team. The

development team play a friendly this weekend against Cirencester Town Ladies with Jason Brizzell and Amanda Martin taking the helm. This is a really young side and our new managers have lots of experience to support them in their first year in women's football in the Wiltshire Ladies County League.

Kelvin Jackson takes over the role as the club's Under-16s Manager with Denise Bach doing a fantastic job with the administration of the team. We wish them well in their up-and-coming fixtures in the Oxford Mail Girls League.

The Centre for Excellence girls are set for their first competitive games in the Wantage Town pre-season tournament on the 30th and 31st August. This will give our girls the perfect opportunity to pit their wits against boys' sides. Both myself and Jon Holloway have seen huge benefits for our elite sides in playing against local boys teams: the pace is quicker than the girls' game and poses different problems for our players to overcome. This will be a great way to prepare for our elite games programme for the 2014/15 season.

We have also added some new staff to the CFFE this season with Clair Power, Steve Pawelek and Sammy Smith joining the coaching team. I'm sure they will make a huge impact and help us maintain the STFC Girls CFFE as the best Elite Girls Programme in the county.

Enjoy the game today and fingers crossed for six points this weekend!

SHANE HEWLETT

WOMEN & GIRLS DEV. OFFICER

STFC 2014/15 FIXTURES:

Sun Aug 24	St Nicholas	H
Sun Aug 31	Charlton Athletic	LC-1 A
Thur Sept 4	Larkhall Athletic	A
Sun Sept 7	Chichester City	A
Sun Sept 14	Keynsham T. Dev	H
Sun Sept 21	Exeter City	H
Sun Sept 28	Cheltenham Town	A
Thur Oct 2	Larkhall Athletic	H
Sun Oct 5	Keynsham T. Dev	A
Sun Oct 26	Chichester City	H
Sun Nov 2	FA CUP	TBC
Sun Nov 9	St Nicholas	A
Sun Nov 23	Forest Green Rovers	H
Sun Dec 14	Shanklin	H
Sun Jan 4	Southampton Saints	A
Sun Jan 25	Gosport Borough	H
Sun Feb 1	Cheltenham Town	H
Sun Feb 8	Exeter City	A
Sun Feb 22	Gosport Borough	A
Sun Mar 1	Southampton Saints	H
Sun Mar 22	Forest Green Rovers	A
Sun Apr 5	Shanklin	A



■ Pre-season action vs Portsmouth.

KEEP IN TOUCH...



For more information
contact us...

Martin Wheeler
STFC Ladies Chairman

Roger Reeves
STFC Ladies Vice Chairman

Jon White
STFC Ladies Secretary
01793 842470

Shane Hewlett
STFC Women & Girls Development Officer -
07919 112982

Steve Robertson
First Team Manager -
stfcladies@hotmail.com
Swindon Town Ladies general Enquiries -
FITC OFFICE 01792 421303

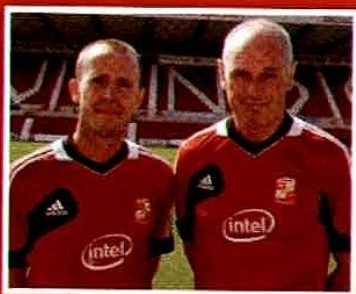
website -
www.stfitc.co.uk



KEEP IN TOUCH...



Introducing our Community
Development Managers...



Jon Holloway **Clive Maguire**
jon@stfc-fite.co.uk clive@stfc-fite.co.uk
0796 6305320 0790 1570236

"Like" us on Facebook... **STFC**
Follow us on Twitter... **@STFC**
Web: www.stfc.co.uk
Tel: 01793 421303

OUR COURSES...

- Holiday Courses
- Soccer Centres
- After School Coaching Clubs
- Saturday Team Club
- Tiny Tots (2-3 year olds)
- Mini Soccer (4-5 year olds)
- Extra Time (over 60s Healthy Living Programmes)
- Birthday Parties
- Disability Programme
- Twilight Football:
Teenage Sessions
- Ground Tours
- Club Coaching Days
- Free In-Schools Coaching
- Girls Coaching &
Development & Centre
For Excellence
- Multi Sports
- Swindon Town Ladies
Football Club

FOOTBALL IN THE COMMUNITY



GOOD afternoon and welcome back
to The County Ground for what I am
sure will be an exciting afternoon...

IT wasn't just a special day for Swindon Town's first team on Saturday 9th August, it was also a very special day for the Swindon Rockets who hosted their first Powerchair Football tournament which was staged at the Oasis Leisure Centre. The event, which was supported by Swindon Town FITC, proved to be an outstanding success with all the players displaying great skill and technique in a very competitive arena throughout the whole day.

The tournament wasn't hindered by two late cancellations of teams on the Friday as the four teams that took part gave the crowd lots to enjoy and cheer about during the day. Evergreens from Watford were a very strong side with the Rockets fielding two teams and Reading making up the fourth. Everybody competed

against each other and the one winner on the day was definitely football.

Rachel Lambert from the Swindon Rockets commented: "It was a great success and we are delighted that the participants enjoyed the day so much. In conjunction with



Main Sponsor



Intel, the Intel logo are trademarks or registered trademarks of Intel Corporation or its subsidiaries in the United States and other Countries.

RED&WHITE



the bucket collections we have planned again through FITC at two home games, we are hoping to raise enough money to stage future events here in Swindon."

I was absolutely delighted to go down and support Rachel, Phil and Kay who work tirelessly to provide a quality football team for these young people with severe disabilities. Every Monday evening they have coaching sessions at Nova Hreod School where they are put

through their paces to prepare for such tournaments as these. As a charitable trust we are extremely keen to support the club to enable them to fulfil more fixtures and festivals such as the one which was staged at the Oasis.

CHARITY FOOTBALL MATCH...

WE are also delighted to be supporting a charity football match on Sunday 24th August in memory of Jack Savage,

who was tragically killed last year in a road traffic accident. Jack attended our Football Development Courses for many years which we know he loved to attend with his friends and peers from the Wanborough area. Steve and Tanya, Jack's parents, have requested that all proceeds raised at the charity match go towards our Football in the Community Disability Programme which will, again, enable us to continue delivering courses to these young children.



SPECIAL DISCOUNT PRICES

Just mention Swindon Town FC
on arrival at Allen Ford to claim
your preferential discount.



- New Car Sales
- Used Car Sales
- Servicing
- Parts
- Finance arranged
- MOT's

Plus all the usual benefits of a Ford Main Dealer

Retail sales only. Finance subject to status, guarantees may be required. Picture for illustration purposes only.



allenford

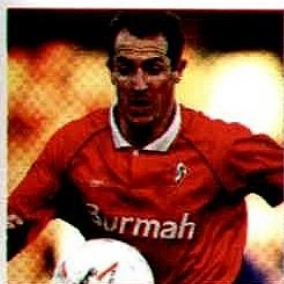
www.allenford.com/west

SWINDON

Drakes Way, SN3 3LL

01793 646600

Open: Mon-Fri 8.30am - 7.00pm, Sat 9.00am - 5.00pm, Sun 10.00am - 4.00pm



THE CHALK BOARD

WITH STEVE WHITE

To sponsor this page
call 0844 358 2668

WITH three of the first four fixtures away from home, we can be very pleased that, going into this afternoon's encounter with Crewe, we have only been beaten once.

CRAWLEY was a match where we had 62% of possession and 26 attempts at goal, not to mention the seemingly unfair dismissal of Louis Thompson where the referee made the call being a full 60 metres away from the incident, and without consulting his linesmen.

I witnessed the Capital One Cup tie at Luton, which produced an excellent team performance. We totally dominated possession of the ball forcing the home team to defend in numbers for long periods of the game – another two goals for the poacher Michael Smith whose second goal was brilliantly taken with deft right and left foot touches. Nathan Byrne was the best player on the pitch producing a fantastic display of wing play from the right flank.

In the 2-2 mid-week draw at Gillingham, Mark Cooper was disappointed to come away from the match with just a share of the spoils. After we again dominated possession but gave away two gift goals to our opponents. The expectation levels have risen – technically our players can match any team in this league.

If we can improve our concentration defensively and be more ruthless and clinical with the final pass or shot in an attacking mode then the team will surely benefit from our domination of the ball.

It was good to see Andy Williams come off the bench



at Luton – it was an inspired substitution by Mark which gave the team another dimension going forward when he turned and ran at the Luton defence forcing a number of corners. Andy has had a tough year out with his knee injury and his first goal of the season at Gillingham will boost his confidence. I expect to see a lot more from him – he has bags of natural ability, a great turn of pace and can hurt the last man.

The Premier League campaign kicked off last weekend with Louis Van Gaal's first home game with Manchester United ending in defeat to Swansea – after beating no less than Real Madrid, Liverpool, Roma and Inter Milan in their pre-season tour of America.

Van Gaal started with three at the back against Swansea but changed the formation to a back four at half time, having

promised in pre-season he'd stick to three at the back! Consolation for United fans is that the new manager's first games can be as misleading as summer tours. Apparently Alex Ferguson lost 2-0 to Oxford and David Moyes beat Swansea 4-1 away from home...

Arsenal look to have added two players of real quality in Debuchy and Sánchez and, having no trophies to show for the previous 500 or so matches (or eight years if you prefer) Arsène Wenger suddenly has two pieces of silverware in the last four months – could they stay the course this season and finally lift the Premier League trophy again?

Man City, as champions, have made a winning start at Newcastle but will they be restricted by the Financial Fair Play rules as they have not strengthened as significantly as in previous summers? Liverpool, having spent £100 million on eight players, have bolstered their squad to cope with the rigours of the Champions League – how will the sale of Suarez affect their 'goals for' column?

I fancy Chelsea to go all the way this year with Fabregas, Luis and Costa all recruited from the Spanish League, as well as welcoming back Courtois – they look to have a great balance and strength in depth and, of course, that Mourinho stardust!

STFC HALL OF FAME MEMBER

Steve White

ON THE ROAD

NEXT UP AWAY



SAS TRAVEL



VS CHESTERFIELD



We are now taking bookings for the visit to Chesterfield.

Date: 06/09/2014

Price: £21 Adult, £19 Junior

£2 Discount for Supporters Club Members on production of membership card. Departs The County Ground at **9am**



VS BRADFORD CITY



We are now taking bookings for the visit to Bradford.

Date: 13/09/2014

Price: £25 Adult, £23 Junior

£2 Discount for Supporters Club Members on production of membership card. Departs The County Ground at **8am**



VS BARNLEY



We are now taking bookings for the visit to Barnley.

Date: 27/09/2014

Price: £23 Adult, £21 Junior

£2 Discount for Supporters Club Members on production of membership card. Departs The County Ground at **8.30am**

All seats must be paid for at time of booking. Please note that credit/debit card payment will be taken at time of booking. Proof of age may be required when booking Junior seats

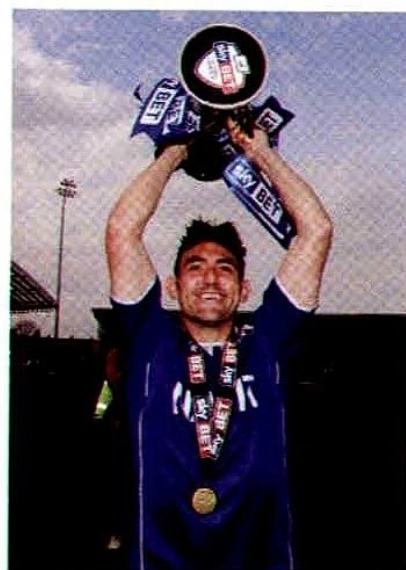
SAS CONTACT DETAILS:

Call on **01793 536757** and leave a message on the answer phone, SAS Travel will reply as soon as possible. Alternatively, email sastravel@sky.com or follow SAS Travel on Twitter @SAS_Travel

R&W looks ahead to Swindon's trip to the Proact Stadium.

SWINDON make their first ever visit to the Proact Stadium when they take on Chesterfield in a fortnight's time. The Spireites were promoted as champions from League 2 last season and have made a flying start to the new campaign in a higher division. The last meeting between the two sides was at Wembley Stadium in the final of the Johnstone's Paint Trophy; the Derbyshire side coming out on top by two goals to nil on that occasion to lift the trophy. Nearly nine years have passed since Swindon have visited Chesterfield in a league game. In December 2005, it was Hameur Bouzza who earned Swindon a point in a 1-1 draw at Saltergate. Swindon will be hoping to halt a winless streak at Chesterfield that stretches back to 2002. On that day, a double from Danny Invincible, coupled with goals from Eric Sabin and Sam Parkin saw Swindon come away with a 4-2 victory. Town fans will recognise a familiar face in the Spireites' ranks in the form of Gary Roberts who spent the 2012/13 campaign with Swindon at The County Ground. During his time in Wiltshire, the winger made over 40 appearances in the famous red and white and bagged four goals including two stunning efforts at Tranmere that took Town top of League 1.

Full ticket and travel details for Town fans wishing to make the trip to Chesterfield are available on these pages.



SAS TRAVEL BOOKING GUIDELINES:

THE following guidelines are designed to allow SAS Travel to ensure that they can take as many fans as want to travel with them to each away game.

- As a general rule, SAS Travel have to order coaches one week before the fixture date. Therefore if you leave booking until within this time, they cannot always guarantee that there will still be spaces available.
- After this time, SAS Travel will always try (alongside their coach provider) to source further coaches and meet all the demand for spaces, although they cannot run a coach unless economically viable to do so.
- SAS Travel tend to open games for booking around three weeks before the fixture date and usually have three fixtures booking at any one time. This may increase to four due to fixture rearrangements.
- SAS Travel advise that the best policy is to book as early as you can to ensure that you get the spaces that you want.

TICKET DETAILS

www.stfcdirect.com



COMING up home and away...



SWINDON TOWN vs BRIGHTON & HA (H)

Tuesday 26th August, 7.45pm Kick-Off
The County Ground

TICKET PRICES:

Adult £12, Concessions £10, Junior U16 £5

Tickets now on general sale.



SWINDON TOWN vs COVENTRY CITY (H)

Saturday 30th August, 3pm Kick-Off
The County Ground

TICKET PRICES: SILVER CATEGORY (See right)

Tickets now on general sale.



CHESTERFIELD vs SWINDON TOWN (A)

Saturday 6th September, 3pm Kick-Off
The Proact Stadium, S41 8NZ

PRICES:

Adult £20
Over 65 £13
17-18yrs £13
Junior U16 £9

Ambulant and wheelchair disabled
pay the age related prices.
Advance ticket sales will stop at
midday on 05/09/2014

Tickets will be on sale on the
match day at Chesterfield.
CASH ONLY.

Tickets
available to
buy online.



BRADFORD CITY vs SWINDON TOWN (A)

Saturday 13th September, 3pm Kick-Off
Coral Windows Stadium, BD8 7DY

TICKET PRICES:

To be confirmed.



SWINDON TOWN vs OLDHAM ATHLETIC (H)

Tuesday 16th September, 7.45pm Kick-Off
The County Ground

TICKET PRICES: BRONZE CATEGORY (See right)

Tickets now on general sale.



HOME TICKET PRICES

MATCH categories for the 2014/15 season will be announced in advance of each fixture.

GOLD:

	SIDES	TEND
Adults:	£27	£20
Concessions:	£19	£15
Young Adults (16-18):	£19	£15
Juniors (15 & Under):	£12	£12
Under 10s	FREE*	

SILVER:

	SIDES	TEND
Adults:	£25	£19
Concessions:	£19	£15
Young Adults (16-18):	£17	£15
Juniors (15 & Under):	£12	£12
Under 10s	FREE*	

BRONZE:

	SIDES	TEND
Adults:	£23	£18
Concessions:	£18	£14
Young Adults (16-18):	£16	£14
Juniors (15 & Under):	£10	£10
Under 10s	FREE*	

Adult:

Aged 19-64 on fixture date

Conc. Senior 65:

Aged 65 on fixture date

Conc. Student:

In Full Time Education

Conc. Disabled:

Registered disabled only

Young Adult:

Aged 16-18 on fixture date

Juniors Under 16:

Aged 15 or Under on fixture date

Reminder: Juniors are not permitted into the Fast Plant Town End unaccompanied. Unaccompanied 12-14 year olds will be issued tickets in the family enclosure. Under 12s must be accompanied by an Adult in all areas.

*To qualify for a FREE under 10 ticket, children need to join the Junior Reds for a ONE OFF PAYMENT OF £30, proof of age will be required at time of purchase. Under 10s must be accompanied by a full paying Adult. To avoid long queues on matchdays it is advantageous to register and purchase family/FREE under 10 tickets in advance.

0871 876 1993
www.stfcdirect.com

2014/15 GAME CENTRE

KEY: 1 = Number of goals scored,
First substitution, Second substitution, Third substitution

RES ATT



AUGUST

Sat Aug 9	Scunthorpe United	H	3-1	7,060 (454)	FODERINGHAM	N THOMPSON	TURNBULL	LELAN	B SMITH
Tue Aug 12	Luton Town CAP R1	A	2-1	4,410 (436)	FODERINGHAM	N THOMPSON	TURNBULL	BRANCO	B SMITH
Sat Aug 16	Crawley Town	A	0-1	2,710 (667)	FODERINGHAM	N THOMPSON	TURNBULL	BRANCO	BARTHAM
Tue Aug 19	Gillingham	A	2-2	5,264 (TBC)	FODERINGHAM	N THOMPSON	TURNBULL	BRANCO	B SMITH
Sat Aug 23	Crewe Alexandra	H	3pm						
Tue Aug 26	Brighton & HA CAP R2	H	7.45pm						
Sat Aug 30	Coventry City	H	3pm						

SEPTEMBER

WC TBC	Newport Co. JPT R1	A	TBC						
Sat Sep 6	Chesterfield	A	3pm						
Sat Sep 13	Bradford City	A	3pm						
Tue Sep 16	Oldham Athletic	H	7.45pm						
Sat Sep 20	Sheffield United	H	3pm						
Sat Sep 27	Barnsley	A	3pm						

OCTOBER

Sat Oct 4	Leyton Orient	A	3pm						
Sat Oct 11	Preston North End	H	3pm						
Sat Oct 18	Yeovil Town	A	3pm						
Tue Oct 21	Rochdale	H	7.45pm						
Sat Oct 25	Colchester United	H	3pm						

NOVEMBER

Sat Nov 1	Milton Keynes Dons	A	3pm						
Sat Nov 8	FA Cup R1	TBC							
Sat Nov 15	Bristol City	H	3pm						
Sat Nov 22	Peterborough United	A	3pm						
Sat Nov 29	Fleetwood Town	H	3pm						

DECEMBER

Sat Dec 13	Notts County	A	3pm						
Sat Dec 20	Doncaster Rovers	H	3pm						
Fri Dec 26	Walsall	A	3pm						
Sun Dec 28	Port Vale	H	3pm						

JANUARY

Sat Jan 3	Fleetwood Town	A	3pm						
Sat Jan 10	Coventry City	A	3pm						
Sat Jan 17	Chesterfield	H	3pm						
Sat Jan 24	Bradford City	H	3pm						
Sat Jan 31	Sheffield United	A	3pm						

FEBRUARY

Sat Feb 7	Barnsley	H	3pm						
Tue Feb 10	Oldham Athletic	A	7.45pm						
Sat Feb 14	Scunthorpe United	A	3pm						
Sat Feb 21	Crawley Town	H	3pm						
Sat Feb 28	Crewe Alexandra	A	3pm						

MARCH

Tue Mar 3	Gillingham	H	7.45pm						
Sat Mar 7	Notts County	H	3pm						
Sat Mar 14	Port Vale	A	3pm						
Tue Mar 17	Doncaster Rovers	A	7.45pm						
Sat Mar 21	Walsall	H	3pm						
Sat Mar 28	Colchester United	A	3pm						

APRIL

Fri Apr 3	Milton Keynes Dons	H	3pm						
Mon Apr 6	Bristol City	A	3pm						
Sat Apr 11	Peterborough United	H	3pm						
Tue Apr 14	Rochdale	A	7.45pm						
Sat Apr 18	Yeovil Town	H	3pm						
Sat Apr 25	Preston North End	A	3pm						

MAY

Sat May 2	Leyton Orient	H	3pm						
-----------	---------------	---	-----	--	--	--	--	--	--



LUONGO
LUONGO
LUONGO
LUONGO

BYRNE
BYRNE
BYRNE
BYRNE

KASIM
KASIM
KASIM
KASIM

L THOMPSON
L THOMPSON
L THOMPSON
GLADWIN

GLADWIN
GLADWIN
GLADWIN
WILLIAMS 1

M SMITH 2
M SMITH 2
M SMITH
M SMITH

BRANCO
BARTHRAM
WILLIAMS
BARKER

WILLIAMS
WILLIAMS
RANDALL
LELAN

SUB NOT USED
MARSHALL
SUB NOT USED
SUB NOT USED

SUPPORTING FANS WITH OUR MOST POPULAR CARD.

Our Capital One Classic credit card
already has over 4.4 million fans.
Find out more at capitalone.co.uk



THE CREDIT CARD THAT SUPPORTS THE SUPPORTERS.



**PROUD SPONSORS OF
THE CAPITAL ONE CUP.**

2014/15 GAME CENTRE



POS	TEAM	P	W	HOME				A	W	AWAY				GD	PTS
				D	L	F	D			L	F	A			
1	Fleetwood	3	1	0	0	2	1	2	0	0	3	0	+4	9	
2	Bradford	3	1	0	0	3	2	1	1	0	3	1	+3	7	
3	Bristol C	3	1	1	0	2	1	1	0	0	2	1	+2	7	
4	MK Dons	3	1	0	0	4	2	1	0	1	3	3	+2	6	
5	Peterborough	3	1	0	1	4	4	1	0	0	1	0	+1	6	
6	Chesterfield	3	1	0	1	2	2	1	0	0	2	1	+1	6	
7	Crawley	3	1	0	1	2	3	1	0	0	1	0	0	6	
8	Preston	3	0	1	0	1	1	1	1	0	5	1	+4	5	
9	Port Vale	3	0	1	0	1	1	1	1	0	4	2	+2	5	
10	Doncaster	3	0	1	1	2	4	1	0	0	3	0	+1	4	
11	SWINDON	3	1	0	0	3	1	0	1	1	2	3	+1	4	
12	Leyton Orient	3	0	0	1	1	2	1	1	0	3	1	+1	4	
13	Gillingham	3	1	1	0	4	2	0	0	1	2	4	0	4	
14	Coventry	3	1	1	0	3	2	0	0	1	2	3	0	4	
15	Barnsley	3	0	0	1	0	1	1	1	0	4	3	0	4	
16	Notts Co	3	1	0	1	2	2	0	1	0	1	1	0	4	
17	Rochdale	3	0	0	1	0	1	1	0	1	6	4	+1	3	
18	Sheff Utd	3	0	0	1	1	2	1	0	1	2	2	-1	3	
19	Yeovil	3	0	0	1	0	3	1	0	1	2	3	-4	3	
20	Walsall	3	0	1	1	1	2	0	1	0	1	1	-1	2	
21	Oldham	3	0	1	1	2	4	0	1	0	2	2	-2	2	
22	Colchester	3	0	1	0	2	2	0	0	2	2	4	-2	1	
23	Crewe	3	0	0	2	3	7	0	0	1	1	2	-5	0	
24	Scunthorpe	3	0	0	2	0	6	0	0	1	1	3	-8	0	

STFC Player Stats:



No.	Player	Age	SBL1	FAC	CAP	JPT	Total	Goals	Yellow	Red	STFC Apps
1	Wes Foderingham	23	3	-	1	-	4	-	-	-	146
2	Nathan Thompson	23	3	-	1	-	4	-	1	-	76(12)
3	Nathan Byrne	22	3	-	1	-	4	-	-	-	48(8)
4	Massimo Luongo	21	3	-	1	-	4	1	-	-	65(1)
6	Jordan Turnbull	19	3	-	1	-	4	-	1	-	4
7	Ben Gladwin	22	3	-	1	-	4	-	-	-	11(10)
8	Yaser Kasim	23	3	-	1	-	4	-	2	-	45(4)
9	Michael Smith	22	3	-	1	-	4	4	1	-	24
10	Andy Williams	27	1(2)	-	(1)	-	1(3)	1	-	-	50(6)
11	Bradley Smith	20	2	-	1	-	3	-	-	-	3
15	Josh Lelan	19	1(1)	-	-	-	1(1)	-	-	-	1(1)
16	Connor Waidon	19	-	-	-	-	-	-	-	-	1(3)
17	Ryan Harley	29	-	-	-	-	-	-	-	-	18(7)
18	George Barker	22	(1)	-	-	-	(1)	-	-	-	2(7)
19	Louis Thompson	19	2	-	1	-	3	-	1	1	26(15)
21	Mathew Jones	18	-	-	-	-	-	-	-	-	(1)
22	Darren Ward	35	-	-	-	-	-	-	-	-	88
23	Jack Barthram	20	1	-	(1)	-	1(1)	-	-	-	7(10)
24	Curtis Da Costa	-	-	-	-	-	-	-	-	-	-
25	Tyrell Belford	20	-	-	-	-	-	-	-	-	9
26	Anton Rodgers	21	-	-	-	-	-	-	-	-	-
27	Josue Antonio	18	-	-	-	-	-	-	-	-	-
29	Raphael Rossi Branco	24	2(1)	-	1	-	3(1)	-	1	-	19(3)
30	Harry Agombar	22	-	-	-	-	-	-	-	-	-
31	Will Randall	-	(1)	-	-	-	(1)	-	-	-	(2)
32	Lee Marshall	-	-	-	(1)	-	(1)	-	-	-	(1)

2014/15 STAT PACK

TOTAL HOME ATTENDANCE

7,060



TOTAL TRAVELLING TOWN FANS

1,103



TOTAL SHOTS ON GOAL

63



TOTAL SHOTS ON TARGET

25



TOP SCORER
MICHAEL SMITH

4



TOTAL GOALS FOR

7



TOTAL GOALS AGAINST

5



TOTAL CLEAN SHEETS

0



TOTAL YELLOW CARDS

7



TOTAL RED CARDS

1





PRESSING MATTERS

TOM OTREBSKI

RED & WHITE

PRODUCED BY
SWINDON TOWN
F.C.



WE'RE only four games into the new season but I have enjoyed every minute of 2014/15 so far.

WELL, perhaps not every minute. I can recall one particular occasion at Crawley last week that had me shuffling uncomfortably in my seat but the less said about that the better. The manager spoke afterwards about the team's performance and I think those of you who were there in Sussex would wholeheartedly agree that Town were utterly in control for the majority of the game and deserved something. 26 shots on goal and 62% possession gives you an indication of how things went. That, combined with the fact that Reds' keeper Brian Jensen was given the Man of the Match award really goes to show how much pressure Swindon put on the home side. That defeat, of course, came off the back of two great wins. Firstly, the opening day game against Scunthorpe where the first-half performance set the platform for the most perfect of starts to the new season. Then, at Luton in the Capital One Cup, we witnessed a comeback full of determination to set up a tie against Championship outfit, Brighton and Hove Albion this coming Tuesday.

Of course, in midweek, a number of brave, hardy souls made the long trip around the M25 to Gillingham. In almost a carbon copy of the game at Crawley last Saturday, Town were completely and utterly dominant. It was great to see Andy Williams back amongst the goals and to see Rapha Branca



"I can't think of anything railway-related that fits so we'll stick with the Railway Derby."

involved for the equaliser. I'm sure he would love to claim that as his first goal in Swindon colours but it was definitely an own goal! A late equaliser makes a journey home from an away game all the more palatable - even if they do shut the M4 for night-time repairs...

Late last week, I was informed of the sad passing of Swindon Town Hall of Famer, George Hudson. George, or 'Garth' as he was known, was a stalwart of the Town side of the 1950s and spent over a decade at The County Ground. It seems quite appropriate that we have just started our look back at the decade during which he made the vast majority of his 400-plus

appearances so I hope that the "50s in Focus" feature will be a fitting tribute to George's time in Wiltshire.

Today, we'll witness the Railway Derby against Crewe. I've tried to think of some clever puns on monikers like El Clasico or the Old Firm but I can't think of anything railway-related that fits so we'll stick with the Railway Derby. Swindon didn't do too badly the last time both sides met at The County Ground. A repeat performance would go down very nicely indeed.

Enjoy the game.

TOM OTREBSKI
Club Press Officer



sky BET

**WIN
£250,000
FOR YOUR
CLUB**

**AND £5,000 FOR
YOURSELF BY
BETTING WITH US**

ARE YOU IN?
skybet.com/swindon

SUPPORTING SWINDON TOWN FOOTBALL CLUB...



TODAY'S SPONSORS

Match Sponsor

DAVID M. COE
FINANCIAL PLANNING LTD

Joint Matchball Sponsors

Prospect
Hospice

IMAGINE
CRUISING

Programme Sponsor



MAIN CLUB SPONSORS

IMAGINE
CRUISING



C|F|M
COTSWOLD
FARM MACHINERY

DAVID M. COE
FINANCIAL PLANNING LTD



OFFICIAL CLUB PARTNERS



ARKELL'S
FAMILY BREWERS



BBC WILTSHIRE
103.3 FM | 104.3 FM | DAB | bbc.co.uk/wiltshire

NSPCC
Cruelty to children must stop. FULL STOP.



BARNES



Capture
cctv solutions ltd

verelogic
IT Solutions